

Datasheet for ABIN633963
anti-Calreticulin 3 antibody (N-Term)



[Go to Product page](#)

1 Image

Overview

Quantity:	100 µL
Target:	Calreticulin 3 (CALR3)
Binding Specificity:	N-Term
Reactivity:	Human
Host:	Rabbit
Clonality:	Polyclonal
Conjugate:	This Calreticulin 3 antibody is un-conjugated
Application:	Western Blotting (WB)

Product Details

Immunogen:	Calreticulin 3 antibody was raised using the N terminal of CALR3 corresponding to a region with amino acids MAGPQQPPYLHLAELTASQFLEIWKHFDADGNGYIEGKELENFFQELEK
Specificity:	Calreticulin 3 antibody was raised against the N terminal of CALR3
Purification:	Affinity purified

Target Details

Target:	Calreticulin 3 (CALR3)
Alternative Name:	Calreticulin 3 (CALR3 Products)
Background:	Calreticulins, such as CALR3, are Ca(2+)-binding chaperones localized mainly in the endoplasmic/sarcoplasmic reticulum.

Target Details

Molecular Weight:	42 kDa (MW of target protein)
Pathways:	Activation of Innate immune Response

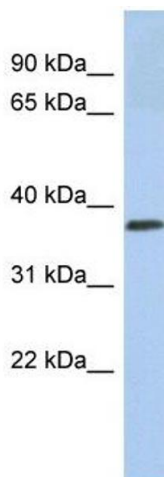
Application Details

Application Notes:	WB: 1 µg/mL Optimal conditions should be determined by the investigator.
Comment:	Calreticulin 3 Blocking Peptide, catalog no. 33R-5666, is also available for use as a blocking control in assays to test for specificity of this Calreticulin 3 antibody
Restrictions:	For Research Use only

Handling

Format:	Lyophilized
Reconstitution:	Lyophilized powder. Add distilled water for a 1 mg/mL concentration of CALR3 antibody in PBS
Concentration:	Lot specific
Buffer:	PBS
Handling Advice:	Avoid repeated freeze/thaw cycles. Dilute only prior to immediate use.
Storage:	4 °C/-20 °C
Storage Comment:	Store at 2-8 °C for short periods. For longer periods of storage, store at -20 °C.

Images



Western Blotting

Image 1. Calreticulin 3 antibody used at 1 ug/ml to detect target protein.