

Datasheet for ABIN633966 **anti-RDH12 antibody**



[Go to Product page](#)

1 Image

Overview

Quantity:	100 µL
Target:	RDH12
Reactivity:	Human
Host:	Rabbit
Clonality:	Polyclonal
Conjugate:	This RDH12 antibody is un-conjugated
Application:	Western Blotting (WB)

Product Details

Immunogen:	RDH12 antibody was raised using a synthetic peptide corresponding to a region with amino acids HIGKIPFHDLQSEKRYSRGFAYCHSKLANVLFTRERAKRLQGTGVTTYAV
Purification:	Affinity purified

Target Details

Target:	RDH12
Alternative Name:	RDH12 (RDH12 Products)
Background:	RDH12 is an NADPH-dependent retinal reductase whose highest activity is toward 9-cis and all-trans-retinol. RDH12 also plays a role in the metabolism of short-chain aldehydes but does not exhibit steroid dehydrogenase activity. Defects in this gene are a cause of Leber congenital amaurosis type 3 (LCA3).
Molecular Weight:	35 kDa (MW of target protein)

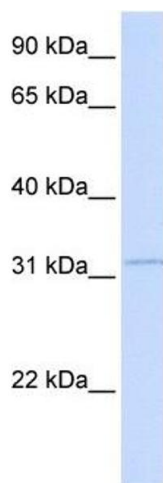
Application Details

Application Notes:	WB: 1 µg/mL Optimal conditions should be determined by the investigator.
Comment:	RDH12 Blocking Peptide, catalog no. 33R-3754, is also available for use as a blocking control in assays to test for specificity of this RDH12 antibody
Restrictions:	For Research Use only

Handling

Format:	Lyophilized
Reconstitution:	Lyophilized powder. Add distilled water for a 1 mg/mL concentration of RDH12 antibody in PBS
Concentration:	Lot specific
Buffer:	PBS
Handling Advice:	Avoid repeated freeze/thaw cycles.
Storage:	4 °C/-20 °C
Storage Comment:	Store at 2-8 °C for short periods. For longer periods of storage, store at -20 °C.

Images



Western Blotting

Image 1. RDH12 antibody used at 1 µg/ml to detect target protein.