

Datasheet for ABIN633980
anti-Nucleobindin 1 antibody (C-Term)



[Go to Product page](#)

1 Image

Overview

Quantity:	100 µL
Target:	Nucleobindin 1 (NUCB1)
Binding Specificity:	C-Term
Reactivity:	Human
Host:	Rabbit
Clonality:	Polyclonal
Conjugate:	This Nucleobindin 1 antibody is un-conjugated
Application:	Western Blotting (WB)

Product Details

Immunogen:	Nucleobindin 1 antibody was raised using the C terminal of NUCB1 corresponding to a region with amino acids PAAHPEGQLKFHPDTPDDVPVPAPAGDQKEVDTSEKLLERLPEVEVPQHL
Specificity:	Nucleobindin 1 antibody was raised against the C terminal of NUCB1
Purification:	Affinity purified

Target Details

Target:	Nucleobindin 1 (NUCB1)
Alternative Name:	Nucleobindin 1 (NUCB1 Products)
Background:	Nucleobindin, also known as calnuc, participates in Ca ²⁺ storage in the Golgi, as well as in other biological processes that involve DNA-binding and protein-protein interactions.

Target Details

Molecular Weight: 54 kDa (MW of target protein)

Application Details

Application Notes: WB: 1 µg/mL
Optimal conditions should be determined by the investigator.

Comment: Nucleobindin 1 Blocking Peptide, catalog no. 33R-6951, is also available for use as a blocking control in assays to test for specificity of this Nucleobindin 1 antibody

Restrictions: For Research Use only

Handling

Format: Lyophilized

Reconstitution: Lyophilized powder. Add distilled water for a 1 mg/mL concentration of NUCB1 antibody in PBS

Concentration: Lot specific

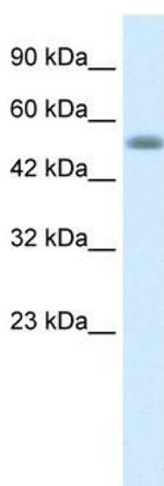
Buffer: PBS

Handling Advice: Avoid repeated freeze/thaw cycles.
Dilute only prior to immediate use.

Storage: 4 °C/-20 °C

Storage Comment: Store at 2-8 °C for short periods. For longer periods of storage, store at -20 °C.

Images



Western Blotting

Image 1. Nucleobindin 1 antibody used at 1 µg/ml to detect target protein.