

Datasheet for ABIN633983 **anti-RDH11 antibody**

1 Image



[Go to Product page](#)

Overview

Quantity:	100 µL
Target:	RDH11
Reactivity:	Human, Rat
Host:	Rabbit
Clonality:	Polyclonal
Conjugate:	This RDH11 antibody is un-conjugated
Application:	Western Blotting (WB)

Product Details

Immunogen:	RDH11 antibody was raised using a synthetic peptide corresponding to a region with amino acids SFFIKTPQQGAQTSLHCALTEGLEILSGNHFS DCHVAWVSAQARNETIAR
Purification:	Affinity purified

Target Details

Target:	RDH11
Alternative Name:	RDH11 (RDH11 Products)
Background:	RHD11, a member of the short-chain dehydrogenase/reductase (SDR) superfamily of oxidoreductases, is expressed at high levels in prostate epithelium, and its expression is regulated by androgens.RHD11, a member of the short-chain dehydrogenase/reductase (SDR) superfamily of oxidoreductases, is expressed at high levels in prostate epithelium, and its expression is regulated by androgens.

Target Details

Molecular Weight: 35 kDa (MW of target protein)

Application Details

Application Notes: WB: 1 µg/mL
Optimal conditions should be determined by the investigator.

Comment: RDH11 Blocking Peptide, catalog no. 33R-8425, is also available for use as a blocking control in assays to test for specificity of this RDH11 antibody

Restrictions: For Research Use only

Handling

Format: Lyophilized

Reconstitution: Lyophilized powder. Add distilled water for a 1 mg/mL concentration of RDH11 antibody in PBS

Concentration: Lot specific

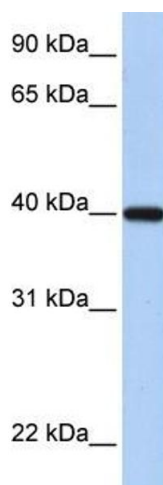
Buffer: PBS

Handling Advice: Avoid repeated freeze/thaw cycles.

Storage: 4 °C/-20 °C

Storage Comment: Store at 2-8 °C for short periods. For longer periods of storage, store at -20 °C.

Images



Western Blotting

Image 1. RDH11 antibody used at 1 ug/ml to detect target protein.