

Datasheet for ABIN633995

**anti-COL1A2 antibody (Middle Region)**[Go to Product page](#)**1** Image

## Overview

Quantity:	100 µL
Target:	COL1A2
Binding Specificity:	Middle Region
Reactivity:	Human, Mouse, Rat, Dog, Rabbit, Cow, Chicken, Xenopus laevis
Host:	Rabbit
Clonality:	Polyclonal
Conjugate:	This COL1A2 antibody is un-conjugated
Application:	Western Blotting (WB)

## Product Details

Immunogen:	Collagen Type I alpha 2 antibody was raised using the middle region of COL1 A2 corresponding to a region with amino acids PGSVGPAGPRGPAGPSGPAGKDGRTGHPGTVGPAGIRGPQGHQGPAGPPG
Specificity:	Collagen Type I alpha 2 antibody was raised against the middle region of COL1 A2
Purification:	Affinity purified

## Target Details

Target:	COL1A2
Alternative Name:	Collagen Type I alpha 2 ( <a href="#">COL1A2 Products</a> )
Background:	COL1A2 is the pro-alpha2 chain of type I collagen whose triple helix comprises two alpha1 chains and one alpha2 chain. Type I is a fibril-forming collagen found in most connective

## Target Details

tissues and is abundant in bone, cornea, dermis and tendon. Mutations in this gene are associated with osteogenesis imperfecta types I-IV, Ehlers-Danlos syndrome type VIIB, recessive Ehlers-Danlos syndrome Classical type, idiopathic osteoporosis, and atypical Marfan syndrome. Symptoms associated with mutations in this gene, however, tend to be less severe than mutations in the gene for the alpha1 chain of type I collagen (COL1A1) reflecting the different role of alpha2 chains in matrix integrity.

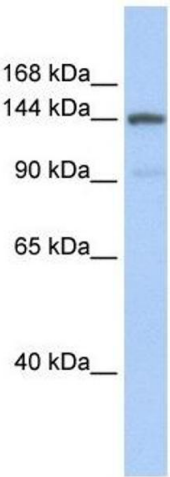
Molecular Weight: 150 kDa (MW of target protein)

## Application Details

Application Notes:	WB: 1 µg/mL Optimal conditions should be determined by the investigator.
Comment:	Collagen Type I alpha 2 Blocking Peptide, catalog no. 33R-7134, is also available for use as a blocking control in assays to test for specificity of this Collagen Type I alpha 2 antibody
Restrictions:	For Research Use only

## Handling

Format:	Lyophilized
Reconstitution:	Lyophilized powder. Add distilled water for a 1 mg/mL concentration of COL0 2 antibody in PBS
Concentration:	Lot specific
Buffer:	PBS
Handling Advice:	Avoid repeated freeze/thaw cycles. Dilute only prior to immediate use.
Storage:	4 °C/-20 °C
Storage Comment:	Store at 2-8 °C for short periods. For longer periods of storage, store at -20 °C.



Western Blotting

**Image 1.** Collagen Type I alpha 2 antibody used at 1 ug/ml to detect target protein.