

Datasheet for ABIN634013 **anti-DAO antibody (C-Term)**

3 Images



[Go to Product page](#)

Overview

Quantity:	100 µL
Target:	DAO (ABP1)
Binding Specificity:	C-Term
Reactivity:	Human
Host:	Rabbit
Clonality:	Polyclonal
Conjugate:	This DAO antibody is un-conjugated
Application:	Western Blotting (WB), Immunohistochemistry (IHC)

Product Details

Immunogen:	ABP1 antibody was raised using the C terminal of ABP1 corresponding to a region with amino acids QFLHNNENIENEDLVAWVTVGFLHIPHSEDIPNTATPGNSVGFLLRPFNF
Specificity:	ABP1 antibody was raised against the C terminal of ABP1
Purification:	Affinity purified

Target Details

Target:	DAO (ABP1)
Alternative Name:	ABP1 (ABP1 Products)
Background:	ABP1 is a membrane glycoprotein that is expressed in many epithelium-rich and/or hematopoietic tissues and oxidatively deaminates putrescine and histamine. The protein may play a role in controlling the level of histamine and/or putrescine in these tissues. It also binds

Target Details

to and is inhibited by amiloride, a diuretic that acts by closing epithelial sodium ion channels.

Molecular Weight: 83 kDa (MW of target protein)

Application Details

Application Notes: WB: 1 µg/mL, IHC: 4-8 µg/mL
Optimal conditions should be determined by the investigator.

Comment: ABP1 Blocking Peptide, catalog no. 33R-7547, is also available for use as a blocking control in assays to test for specificity of this ABP1 antibody

Restrictions: For Research Use only

Handling

Format: Lyophilized

Reconstitution: Lyophilized powder. Add distilled water for a 1 mg/mL concentration of ABP1 antibody in PBS

Concentration: Lot specific

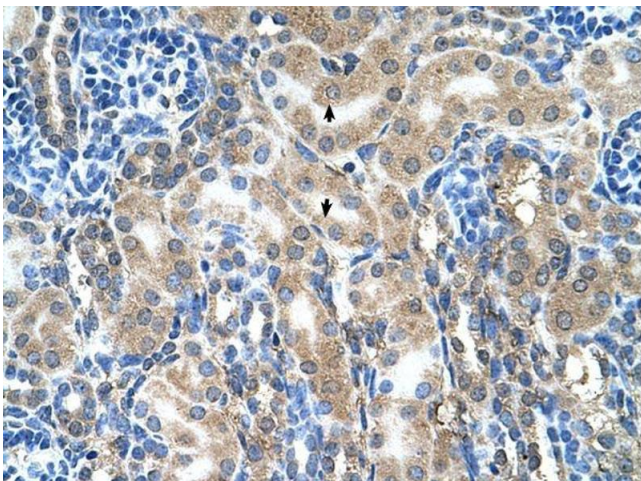
Buffer: PBS

Handling Advice: Avoid repeated freeze/thaw cycles.
Dilute only prior to immediate use.

Storage: 4 °C/-20 °C

Storage Comment: Store at 2-8 °C for short periods. For longer periods of storage, store at -20 °C.

Images



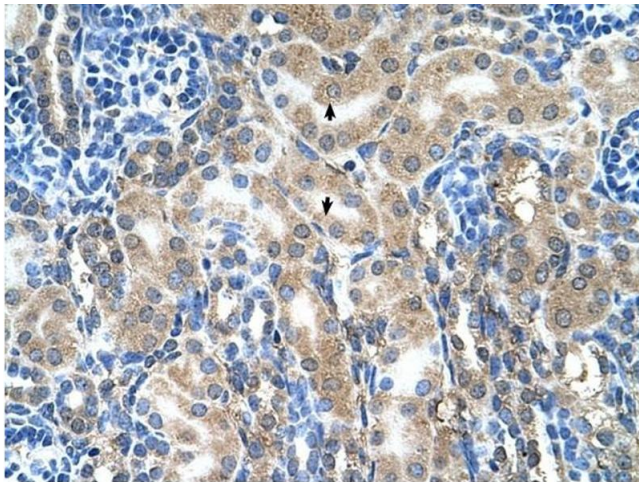
Immunohistochemistry

Image 1. ABP1 antibody was used for immunohistochemistry at a concentration of 4-8 µg/ml. Magnification is at 400X



Western Blotting

Image 2. ABP1 antibody used at 1 ug/ml to detect target protein.



Immunohistochemistry

Image 3. ABP1 antibody was used for immunohistochemistry at a concentration of 4-8 ug/ml to stain Epithelial cells of renal tubule (arrows) in Human Kidney. Magnification is at 400X