

Datasheet for ABIN634017  
**anti-EPX antibody (Middle Region)**



[Go to Product page](#)

1 Image

## Overview

Quantity:	100 µL
Target:	EPX
Binding Specificity:	Middle Region
Reactivity:	Human, Mouse
Host:	Rabbit
Clonality:	Polyclonal
Conjugate:	This EPX antibody is un-conjugated
Application:	Western Blotting (WB)

## Product Details

Immunogen:	EPX antibody was raised using the middle region of EPX corresponding to a region with amino acids LAFRFGHTMLQPFFMRLDSQYRASAPNSHVPLSSAFFASWRIVYEGGIDP
Specificity:	EPX antibody was raised against the middle region of EPX
Purification:	Affinity purified

## Target Details

Target:	EPX
Alternative Name:	EPX ( <a href="#">EPX Products</a> )
Background:	EPX belongs to the peroxidase family, XPO subfamily. Defects in EPX are the cause of eosinophil peroxidase deficiency (EPD).

## Target Details

---

Molecular Weight: 53 kDa (MW of target protein)

## Application Details

---

Application Notes: WB: 1 µg/mL  
Optimal conditions should be determined by the investigator.

Comment: EPX Blocking Peptide, catalog no. 33R-4765, is also available for use as a blocking control in assays to test for specificity of this EPX antibody

Restrictions: For Research Use only

## Handling

---

Format: Lyophilized

Reconstitution: Lyophilized powder. Add distilled water for a 1 mg/mL concentration of EPX antibody in PBS

Concentration: Lot specific

Buffer: PBS

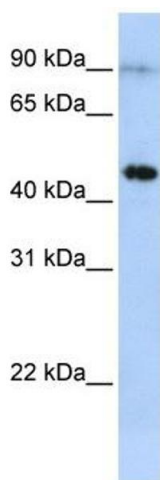
Handling Advice: Avoid repeated freeze/thaw cycles.  
Dilute only prior to immediate use.

Storage: 4 °C/-20 °C

Storage Comment: Store at 2-8 °C for short periods. For longer periods of storage, store at -20 °C.

## Images

---



### Western Blotting

**Image 1.** EPX antibody used at 1 ug/ml to detect target protein.