

Datasheet for ABIN634024
anti-GLA antibody (N-Term)



[Go to Product page](#)

1 Image

Overview

Quantity:	100 µL
Target:	GLA
Binding Specificity:	N-Term
Reactivity:	Human, Mouse
Host:	Rabbit
Clonality:	Polyclonal
Conjugate:	This GLA antibody is un-conjugated
Application:	Western Blotting (WB)

Product Details

Immunogen:	GLA antibody was raised using the N terminal of GLA corresponding to a region with amino acids PQRFPHGIRQLANYVHSKGLKLGİYADVGNKTCAGFPGSFGYYDIDAQTF
Specificity:	GLA antibody was raised against the N terminal of GLA
Purification:	Affinity purified

Target Details

Target:	GLA
Alternative Name:	GLA (GLA Products)
Background:	GLA is a homodimeric glycoprotein that hydrolyses the terminal alpha-galactosyl moieties from glycolipids and glycoproteins. This enzyme predominantly hydrolyzes ceramide trihexoside, and it can catalyze the hydrolysis of melibiose into galactose and glucose. A variety of mutations in

Target Details

this gene affect the synthesis, processing, and stability of this enzyme, which causes Fabry disease, a rare lysosomal storage disorder that results from a failure to catabolize alpha-D-galactosyl glycolipid moieties.

Molecular Weight: 45 kDa (MW of target protein)

Pathways: [SARS-CoV-2 Protein Interactome](#)

Application Details

Application Notes: WB: 1 µg/mL
Optimal conditions should be determined by the investigator.

Comment: GLA Blocking Peptide, catalog no. 33R-7310, is also available for use as a blocking control in assays to test for specificity of this GLA antibody

Restrictions: For Research Use only

Handling

Format: Lyophilized

Reconstitution: Lyophilized powder. Add distilled water for a 1 mg/mL concentration of GLA antibody in PBS

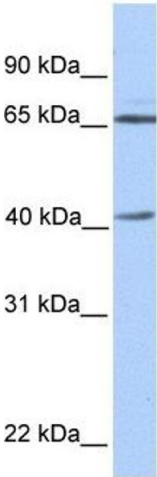
Concentration: Lot specific

Buffer: PBS

Handling Advice: Avoid repeated freeze/thaw cycles.
Dilute only prior to immediate use.

Storage: 4 °C/-20 °C

Storage Comment: Store at 2-8 °C for short periods. For longer periods of storage, store at -20 °C.



Western Blotting

Image 1. GLA antibody used at 1 ug/ml to detect target protein.