

Datasheet for ABIN634035
anti-SERPINA5 antibody (C-Term)



[Go to Product page](#)

1 Image

Overview

Quantity:	100 µL
Target:	SERPINA5
Binding Specificity:	C-Term
Reactivity:	Human
Host:	Rabbit
Clonality:	Polyclonal
Conjugate:	This SERPINA5 antibody is un-conjugated
Application:	Western Blotting (WB)

Product Details

Immunogen:	SERPINA5 antibody was raised using the C terminal of SERPINA5 corresponding to a region with amino acids LPSEGKMQQVENGLSEKTLRKWLKMFKKRQLELYLPKFSIEGSYQLEKVL
Specificity:	SERPINA5 antibody was raised against the C terminal of SERPINA5
Purification:	Affinity purified

Target Details

Target:	SERPINA5
Alternative Name:	SERPINA5 (SERPINA5 Products)
Background:	SERPINA5 belongs to the serpin family. It Inhibits activated protein C as well as plasminogen activators.

Target Details

Molecular Weight: 45 kDa (MW of target protein)

Application Details

Application Notes: WB: 1 µg/mL
Optimal conditions should be determined by the investigator.

Comment: SERPINA5 Blocking Peptide, catalog no. 33R-5288, is also available for use as a blocking control in assays to test for specificity of this SERPINA5 antibody

Restrictions: For Research Use only

Handling

Format: Lyophilized

Reconstitution: Lyophilized powder. Add distilled water for a 1 mg/mL concentration of SERPINA5 antibody in PBS

Concentration: Lot specific

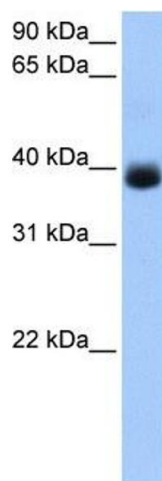
Buffer: PBS

Handling Advice: Avoid repeated freeze/thaw cycles.
Dilute only prior to immediate use.

Storage: 4 °C/-20 °C

Storage Comment: Store at 2-8 °C for short periods. For longer periods of storage, store at -20 °C.

Images



Western Blotting

Image 1. SERPINA5 antibody used at 1 ug/ml to detect target protein.