

Datasheet for ABIN634040
anti-CPQ antibody (N-Term)



[Go to Product page](#)

1 Image

Overview

Quantity:	100 µL
Target:	CPQ
Binding Specificity:	N-Term
Reactivity:	Mouse, Human, Rat
Host:	Rabbit
Clonality:	Polyclonal
Conjugate:	This CPQ antibody is un-conjugated
Application:	Western Blotting (WB)

Product Details

Immunogen:	PGCP antibody was raised using the N terminal of PGCP corresponding to a region with amino acids VDTVGPRLSGSKNLEKAIQIMYQNLQQDGLEKVHLEPVRI PHWERGEESA
Specificity:	PGCP antibody was raised against the N terminal of PGCP
Purification:	Affinity purified

Target Details

Target:	CPQ
Alternative Name:	PGCP (CPQ Products)
Background:	PGCP is a carboxypeptidase that may play an important role in the hydrolysis of circulating peptides.

Target Details

Molecular Weight: 52 kDa (MW of target protein)

Application Details

Application Notes: WB: 1 µg/mL
Optimal conditions should be determined by the investigator.

Comment: PGCP Blocking Peptide, catalog no. 33R-9484, is also available for use as a blocking control in assays to test for specificity of this PGCP antibody

Restrictions: For Research Use only

Handling

Format: Lyophilized

Reconstitution: Lyophilized powder. Add distilled water for a 1 mg/mL concentration of PGCP antibody in PBS

Concentration: Lot specific

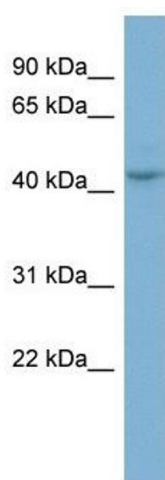
Buffer: PBS

Handling Advice: Avoid repeated freeze/thaw cycles.
Dilute only prior to immediate use.

Storage: 4 °C/-20 °C

Storage Comment: Store at 2-8 °C for short periods. For longer periods of storage, store at -20 °C.

Images



Western Blotting

Image 1. PGCP antibody used at 1 µg/ml to detect target protein.