

Datasheet for ABIN634076
anti-CDC25B antibody



[Go to Product page](#)

2 Images

Overview

Quantity:	100 µL
Target:	CDC25B
Reactivity:	Human, Dog
Host:	Rabbit
Clonality:	Polyclonal
Conjugate:	This CDC25B antibody is un-conjugated
Application:	Western Blotting (WB), Immunohistochemistry (IHC)

Product Details

Immunogen:	CDC25 B antibody was raised using a synthetic peptide corresponding to a region with amino acids TQTMHDLAGLGSETPKSQVGTLLFRSRRLTHLSLSRRASESSLSESSE
Purification:	Affinity purified

Target Details

Target:	CDC25B
Alternative Name:	CDC25B (CDC25B Products)
Background:	CDC25B is a member of the CDC25 family of phosphatases. CDC25B activates the cyclin dependent kinase CDC2 by removing two phosphate groups and it is required for entry into mitosis. CDC25B shuttles between the nucleus and the cytoplasm due to nuclear localization and nuclear export signals. The protein is nuclear in the M and G1 phases of the cell cycle and moves to the cytoplasm during S and G2. CDC25B has oncogenic properties, although its role

Target Details

in tumor formation has not been determined.

Molecular Weight: 65 kDa (MW of target protein)

Pathways: [Cell Division Cycle](#), [M Phase](#), [Autophagy](#)

Application Details

Application Notes: WB: 0.25 µg/mL, IHC: 4-8 µg/mL

Optimal conditions should be determined by the investigator.

Comment: CDC25B Blocking Peptide, catalog no. 33R-9253, is also available for use as a blocking control in assays to test for specificity of this CDC25B antibody

Restrictions: For Research Use only

Handling

Format: Lyophilized

Reconstitution: Lyophilized powder. Add distilled water for a 1 mg/mL concentration of CDC20 antibody in PBS

Concentration: Lot specific

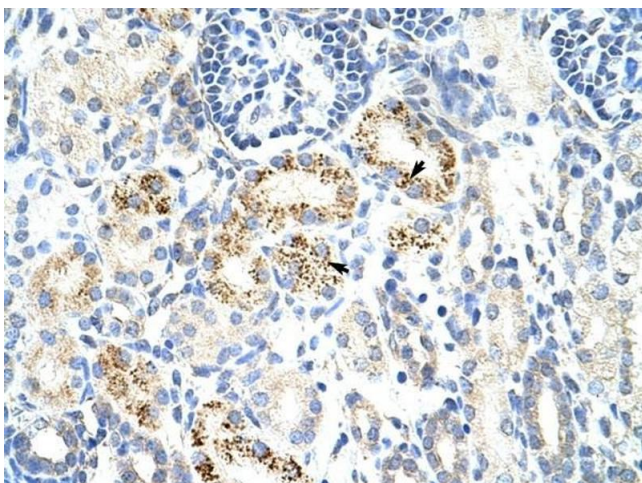
Buffer: PBS

Handling Advice: Avoid repeated freeze/thaw cycles.

Storage: 4 °C/-20 °C

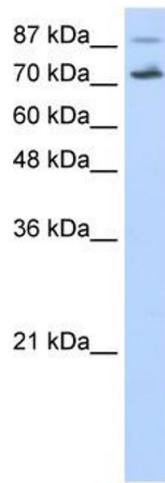
Storage Comment: Store at 2-8 °C for short periods. For longer periods of storage, store at -20 °C.

Images



Immunohistochemistry

Image 1. CDC25B antibody was used for immunohistochemistry at a concentration of 4-8 µg/ml to stain Epithelial cells of renal tubule (arrows) in Human Kidney. Magnification is at 400X



Western Blotting

Image 2. CDC25B antibody used at 0.25 ug/ml to detect target protein.