

Datasheet for ABIN634081
anti-RFC4 antibody



[Go to Product page](#)

1 Image

Overview

Quantity:	100 µL
Target:	RFC4
Reactivity:	Human, Rat, Mouse
Host:	Rabbit
Clonality:	Polyclonal
Conjugate:	This RFC4 antibody is un-conjugated
Application:	Western Blotting (WB)

Product Details

Immunogen:	RFC4 antibody was raised using a synthetic peptide corresponding to a region with amino acids DKLEAVVKDLIDEGHAATQLVNQLHDVWVENNLSDKQKSIITEKLAEVDK
Purification:	Affinity purified

Target Details

Target:	RFC4
Alternative Name:	RFC4 (RFC4 Products)
Background:	The elongation of primed DNA templates by DNA polymerase delta and DNA polymerase epsilon requires the accessory proteins proliferating cell nuclear antigen (PCNA) and replication factor C (RFC). RFC, also named activator 1, is a protein complex consisting of five distinct subunits of 140, 40, 38, 37, and 36 kDa. RFC3 is the 38 kDa subunit. This subunit is essential for the interaction between the 140 kDa subunit and the core complex that consists of the 36, 37,

Target Details

and 40 kDa subunits.

Molecular Weight: 40 kDa (MW of target protein)

Pathways: [Telomere Maintenance](#), [DNA Damage Repair](#), [DNA Replication](#), [Synthesis of DNA](#)

Application Details

Application Notes: WB: 1 µg/mL

Optimal conditions should be determined by the investigator.

Comment: RFC4 Blocking Peptide, catalog no. 33R-2024, is also available for use as a blocking control in assays to test for specificity of this RFC4 antibody

Restrictions: For Research Use only

Handling

Format: Lyophilized

Reconstitution: Lyophilized powder. Add distilled water for a 1 mg/mL concentration of RFC4 antibody in PBS

Concentration: Lot specific

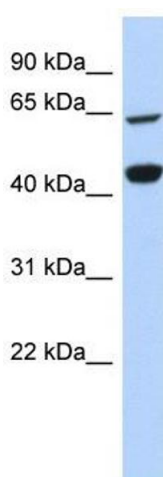
Buffer: PBS

Handling Advice: Avoid repeated freeze/thaw cycles.

Storage: 4 °C/-20 °C

Storage Comment: Store at 2-8 °C for short periods. For longer periods of storage, store at -20 °C.

Images



Western Blotting

Image 1. RFC4 antibody used at 1 ug/ml to detect target protein.