

Datasheet for ABIN634089 **anti-CENPH antibody (N-Term)**



[Go to Product page](#)

1 Image

Overview

Quantity:	100 µL
Target:	CENPH
Binding Specificity:	N-Term
Reactivity:	Human
Host:	Rabbit
Clonality:	Polyclonal
Conjugate:	This CENPH antibody is un-conjugated
Application:	Western Blotting (WB)

Product Details

Immunogen:	CENPH antibody was raised using the N terminal of CENPH corresponding to a region with amino acids MEEQPQMQDADEPADSGGEGRAGGPPQVAGAQAACSEDRMTLLLLRLRAQT
Specificity:	CENPH antibody was raised against the N terminal of CENPH
Purification:	Affinity purified

Target Details

Target:	CENPH
Alternative Name:	CENPH (CENPH Products)
Background:	Centromere and kinetochore proteins play a critical role in centromere structure, kinetochore formation, and sister chromatid separation. CENPH colocalizes with inner kinetochore plate proteins CENP-A and CENP-C in both interphase and metaphase. It localizes outside of

Target Details

centromeric heterochromatin, where CENP-B is localized, and inside the kinetochore corona, where CENP-E is localized during prometaphase. It is thought that this protein can bind to itself, as well as to CENP-A, CENP-B or CENP-C. Multimers of the protein localize constitutively to the inner kinetochore plate and play an important role in the organization and function of the active centromere-kinetochore complex.

Molecular Weight: 27 kDa (MW of target protein)

Application Details

Application Notes: WB: 1 µg/mL
Optimal conditions should be determined by the investigator.

Comment: CENPH Blocking Peptide, catalog no. 33R-5910, is also available for use as a blocking control in assays to test for specificity of this CENPH antibody

Restrictions: For Research Use only

Handling

Format: Lyophilized

Reconstitution: Lyophilized powder. Add distilled water for a 1 mg/mL concentration of CENPH antibody in PBS

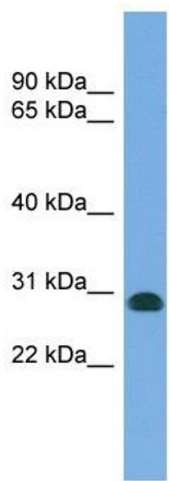
Concentration: Lot specific

Buffer: PBS

Handling Advice: Avoid repeated freeze/thaw cycles.
Dilute only prior to immediate use.

Storage: 4 °C/-20 °C

Storage Comment: Store at 2-8 °C for short periods. For longer periods of storage, store at -20 °C.



Western Blotting

Image 1. CENPH antibody used at 1 ug/ml to detect target protein.