

Datasheet for ABIN634091  
**anti-SMC4 antibody (Middle Region)**



[Go to Product page](#)

1 Image

## Overview

Quantity:	100 µL
Target:	SMC4
Binding Specificity:	Middle Region
Reactivity:	Human, Rat
Host:	Rabbit
Clonality:	Polyclonal
Conjugate:	This SMC4 antibody is un-conjugated
Application:	Western Blotting (WB)

## Product Details

Immunogen:	SMC4 antibody was raised using the middle region of SMC4 corresponding to a region with amino acids EARCHMKPNLGAIAEYKKKEELYLQRVAELDKITYERDSFRQAYEDLRK
Specificity:	SMC4 antibody was raised against the middle region of SMC4
Purification:	Affinity purified

## Target Details

Target:	SMC4
Alternative Name:	SMC4 ( <a href="#">SMC4 Products</a> )
Background:	SMC4 is the central component of the condensin complex, a complex required for conversion of interphase chromatin into mitotic-like condense chromosomes. The condensin complex probably introduces positive supercoils into relaxed DNA in the presence of type I

## Target Details

---

topoisomerases and converts nicked DNA into positive knotted forms in the presence of type II topoisomerases.

Molecular Weight: 147 kDa (MW of target protein)

## Application Details

---

Application Notes: WB: 1 µg/mL  
Optimal conditions should be determined by the investigator.

Comment: SMC4 Blocking Peptide, catalog no. 33R-2280, is also available for use as a blocking control in assays to test for specificity of this SMC4 antibody

Restrictions: For Research Use only

## Handling

---

Format: Lyophilized

Reconstitution: Lyophilized powder. Add distilled water for a 1 mg/mL concentration of SMC4 antibody in PBS

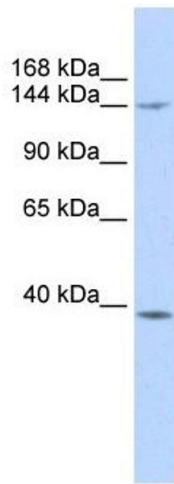
Concentration: Lot specific

Buffer: PBS

Handling Advice: Avoid repeated freeze/thaw cycles.  
Dilute only prior to immediate use.

Storage: 4 °C/-20 °C

Storage Comment: Store at 2-8 °C for short periods. For longer periods of storage, store at -20 °C.



### Western Blotting

**Image 1.** SMC4 antibody used at 1 ug/ml to detect target protein.