

## Datasheet for ABIN634103 **anti-RFC5 antibody**

### 3 Images



[Go to Product page](#)

### Overview

Quantity:	100 µL
Target:	RFC5
Reactivity:	Human, Dog
Host:	Rabbit
Clonality:	Polyclonal
Conjugate:	This RFC5 antibody is un-conjugated
Application:	Western Blotting (WB), Immunohistochemistry (IHC)

### Product Details

Immunogen:	RFC5 antibody was raised using a synthetic peptide corresponding to a region with amino acids METSALKQQEQPAATKIRNLPWVEKYRPQTLNDLISHQDILSTIQKFINE
Purification:	Affinity purified

### Target Details

Target:	RFC5
Alternative Name:	RFC5 ( <a href="#">RFC5 Products</a> )
Background:	The elongation of primed DNA templates by DNA polymerase delta and DNA polymerase epsilon requires the accessory proteins proliferating cell nuclear antigen (PCNA) and replication factor C (RFC). RFC, also named activator 1, is a protein complex consisting of five distinct subunits of 140, 40, 38, 37, and 36 kDa. RFC5 is the 36 kDa subunit. This subunit can interact with the C-terminal region of PCNA. It forms a core complex with the 38 and 40 kDa subunits.

## Target Details

---

The core complex possesses DNA-dependent ATPase activity, which was found to be stimulated by PCNA in an in vitro system.

Molecular Weight: 38 kDa (MW of target protein)

Pathways: [Telomere Maintenance](#), [DNA Damage Repair](#), [DNA Replication](#), [Synthesis of DNA](#)

## Application Details

---

Application Notes: WB: 1 µg/mL, IHC: 4-8 µg/mL  
Optimal conditions should be determined by the investigator.

Comment: RFC5 Blocking Peptide, catalog no. 33R-5977, is also available for use as a blocking control in assays to test for specificity of this RFC5 antibody

Restrictions: For Research Use only

## Handling

---

Format: Lyophilized

Reconstitution: Lyophilized powder. Add distilled water for a 1 mg/mL concentration of RFC5 antibody in PBS

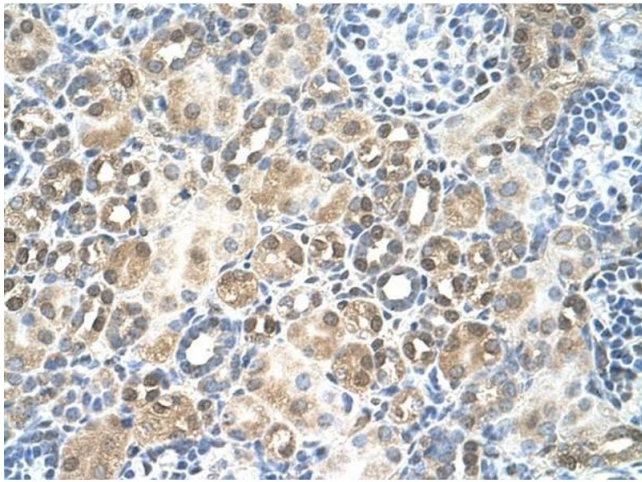
Concentration: Lot specific

Buffer: PBS

Handling Advice: Avoid repeated freeze/thaw cycles.

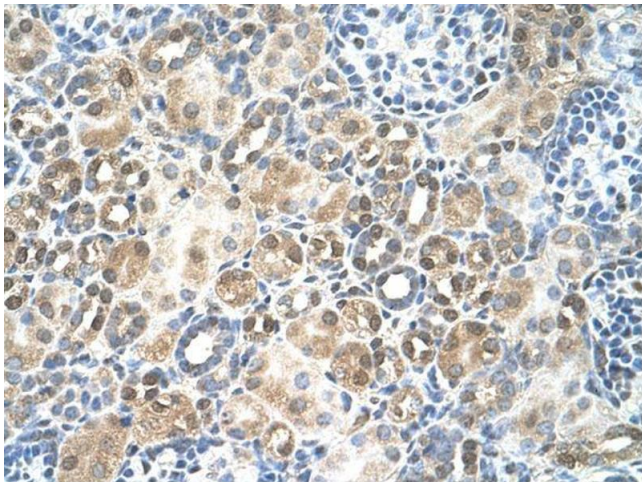
Storage: 4 °C/-20 °C

Storage Comment: Store at 2-8 °C for short periods. For longer periods of storage, store at -20 °C.



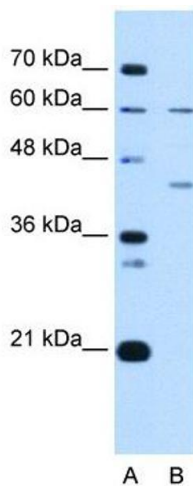
#### Immunohistochemistry

**Image 1.** RFC5 antibody was used for immunohistochemistry at a concentration of 4-8 ug/ml to stain Epithelial cells of renal tubule (arrows) in Human Kidney. Magnification is at 400X



#### Immunohistochemistry

**Image 2.** RFC5 antibody was used for immunohistochemistry at a concentration of 4-8 ug/ml. Magnification is at 400X



#### Western Blotting

**Image 3.** RFC5 antibody used at 1 ug/ml to detect target protein.