

Datasheet for ABIN634105  
**anti-KIF2A antibody (C-Term)**



[Go to Product page](#)

1 Image

## Overview

Quantity:	100 µL
Target:	KIF2A
Binding Specificity:	C-Term
Reactivity:	Human, Mouse, Rat
Host:	Rabbit
Clonality:	Polyclonal
Conjugate:	This KIF2A antibody is un-conjugated
Application:	Western Blotting (WB)

## Product Details

Immunogen:	KIF2 A antibody was raised using the C terminal of KIF2 corresponding to a region with amino acids ETQWGVGSSPQRDDLKLLCEQNEEEVSPQLFTFHEAVSQMVEMEEQVVED
Specificity:	KIF2 A antibody was raised against the C terminal of KIF2
Purification:	Affinity purified

## Target Details

Target:	KIF2A
Alternative Name:	KIF2A ( <a href="#">KIF2A Products</a> )
Background:	KIF2A belongs to the kinesin-like protein family, MCAK/KIF2 subfamily. It contains 1 kinesin-motor domain. KIF2A plus end-directed microtubule-dependent motor required for normal brain development. It may regulate microtubule dynamics during axonal growth. KIF2A is implicated

## Target Details

---

in formation of bipolar mitotic spindles. It has microtubule depolymerization activity. HeLa cells lacking KIF2A show asymmetric or monopolar mitotic spindles. Osteosarcoma cells (U2OS) lacking KIF2A or KIF2B show disorganised or monopolar mitotic spindles.

Molecular Weight: 80 kDa (MW of target protein)

Pathways: [Microtubule Dynamics](#), [Ribonucleoprotein Complex Subunit Organization](#)

## Application Details

---

Application Notes: WB: 1 µg/mL  
Optimal conditions should be determined by the investigator.

Comment: KIF2A Blocking Peptide, catalog no. 33R-2768, is also available for use as a blocking control in assays to test for specificity of this KIF2A antibody

Restrictions: For Research Use only

## Handling

---

Format: Lyophilized

Reconstitution: Lyophilized powder. Add distilled water for a 1 mg/mL concentration of KIF0 antibody in PBS

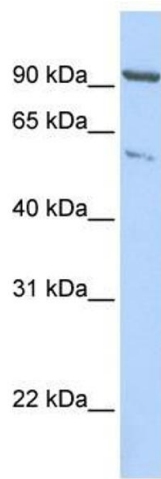
Concentration: Lot specific

Buffer: PBS

Handling Advice: Avoid repeated freeze/thaw cycles.  
Dilute only prior to immediate use.

Storage: 4 °C/-20 °C

Storage Comment: Store at 2-8 °C for short periods. For longer periods of storage, store at -20 °C.



### Western Blotting

**Image 1.** KIF2A antibody used at 1 ug/ml to detect target protein.