

Datasheet for ABIN634107  
**anti-KIF1A antibody (N-Term)**



[Go to Product page](#)

1 Image

## Overview

Quantity:	100 µL
Target:	KIF1A
Binding Specificity:	N-Term
Reactivity:	Mouse, Human, Rat
Host:	Rabbit
Clonality:	Polyclonal
Conjugate:	This KIF1A antibody is un-conjugated
Application:	Western Blotting (WB)

## Product Details

Immunogen:	KIF1 A antibody was raised using the N terminal of KIF1 corresponding to a region with amino acids TTIVNPKQPKETPKSFSFDYSYWSHTSPEDINYASQKQVYRDIGEEMLQH
Specificity:	KIF1 A antibody was raised against the N terminal of KIF1
Purification:	Affinity purified

## Target Details

Target:	KIF1A
Alternative Name:	KIF1A ( <a href="#">KIF1A Products</a> )
Background:	The protein encoded by this gene is a member of the kinesin family. This protein is highly similar to mouse heavy chain kinesin member 1A protein which is an anterograde motor protein that transports membranous organelles along axonal microtubules. It is thought that this

## Target Details

---

protein may play a critical role in the development of axonal neuropathies resulting from impaired axonal transport.

Molecular Weight: 191 kDa (MW of target protein)

## Application Details

---

Application Notes: WB: 1 µg/mL  
Optimal conditions should be determined by the investigator.

Comment: KIF1A Blocking Peptide, catalog no. 33R-9321, is also available for use as a blocking control in assays to test for specificity of this KIF1A antibody

Restrictions: For Research Use only

## Handling

---

Format: Lyophilized

Reconstitution: Lyophilized powder. Add distilled water for a 1 mg/mL concentration of KIF0 antibody in PBS

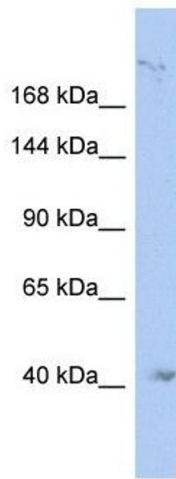
Concentration: Lot specific

Buffer: PBS

Handling Advice: Avoid repeated freeze/thaw cycles.  
Dilute only prior to immediate use.

Storage: 4 °C/-20 °C

Storage Comment: Store at 2-8 °C for short periods. For longer periods of storage, store at -20 °C.



### Western Blotting

**Image 1.** KIF1A antibody used at 1 ug/ml to detect target protein.