

## Datasheet for ABIN634110 **anti-CDT1 antibody (C-Term)**



[Go to Product page](#)

### 1 Image

#### Overview

Quantity:	100 µL
Target:	CDT1
Binding Specificity:	C-Term
Reactivity:	Human, Mouse, Rat
Host:	Rabbit
Clonality:	Polyclonal
Conjugate:	This CDT1 antibody is un-conjugated
Application:	Western Blotting (WB)

#### Product Details

Immunogen:	CDT1 antibody was raised using the C terminal of CDT1 corresponding to a region with amino acids PATPPATPPAASPSALKGVSDLLERIRAKEAQKQLAQMTRCPEQEQLQ
Specificity:	CDT1 antibody was raised against the C terminal of CDT1
Purification:	Affinity purified

#### Target Details

Target:	CDT1
Alternative Name:	CDT1 ( <a href="#">CDT1 Products</a> )
Background:	CDT1 cooperates with CDC6 to promote the loading of the mini-chromosome maintenance complex onto chromatin to form the pre-replication complex necessary to initiate DNA replication.

## Target Details

Molecular Weight:	60 kDa (MW of target protein)
Pathways:	MAPK Signaling, Mitotic G1-G1/S Phases, DNA Replication, Synthesis of DNA

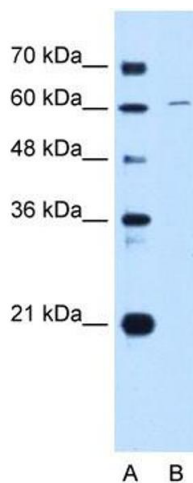
## Application Details

Application Notes:	WB: 1 µg/mL Optimal conditions should be determined by the investigator.
Comment:	CDT1 Blocking Peptide, catalog no. 33R-6985, is also available for use as a blocking control in assays to test for specificity of this CDT1 antibody
Restrictions:	For Research Use only

## Handling

Format:	Lyophilized
Reconstitution:	Lyophilized powder. Add distilled water for a 1 mg/mL concentration of CDT1 antibody in PBS
Concentration:	Lot specific
Buffer:	PBS
Handling Advice:	Avoid repeated freeze/thaw cycles. Dilute only prior to immediate use.
Storage:	4 °C/-20 °C
Storage Comment:	Store at 2-8 °C for short periods. For longer periods of storage, store at -20 °C.

## Images



### Western Blotting

**Image 1.** CDT1 antibody used at 1 µg/ml to detect target protein.