

Datasheet for ABIN634126
anti-MCM8 antibody (C-Term)



[Go to Product page](#)

1 Image

Overview

Quantity:	100 µL
Target:	MCM8
Binding Specificity:	C-Term
Reactivity:	Human, Rat, Mouse
Host:	Rabbit
Clonality:	Polyclonal
Conjugate:	This MCM8 antibody is un-conjugated
Application:	Western Blotting (WB), Immunohistochemistry (IHC)

Product Details

Immunogen:	MCM8 antibody was raised using the C terminal of MCM8 corresponding to a region with amino acids IRLTEARARLELREEATKEDAEDIVEIMKYSMLGTYSDFFGNLDFERSQH
Specificity:	MCM8 antibody was raised against the C terminal of MCM8
Purification:	Affinity purified

Target Details

Target:	MCM8
Alternative Name:	MCM8 (MCM8 Products)
Background:	MCM8 is one of the highly conserved mini-chromosome maintenance proteins (MCM) that are essential for the initiation of eukaryotic genome replication. The hexameric protein complex formed by the MCM proteins is a key component of the pre-replication complex (pre_RC) and

Target Details

may be involved in the formation of replication forks and in the recruitment of other DNA replication related proteins.

Molecular Weight: 94 kDa (MW of target protein)

Pathways: [Mitotic G1-G1/S Phases](#), [DNA Replication](#), [Synthesis of DNA](#)

Application Details

Application Notes: WB: 0.5 µg/mL, IHC: 4-8 µg/mL
Optimal conditions should be determined by the investigator.

Comment: MCM8 Blocking Peptide, catalog no. 33R-4137, is also available for use as a blocking control in assays to test for specificity of this MCM8 antibody

Restrictions: For Research Use only

Handling

Format: Lyophilized

Reconstitution: Lyophilized powder. Add distilled water for a 1 mg/mL concentration of MCM8 antibody in PBS

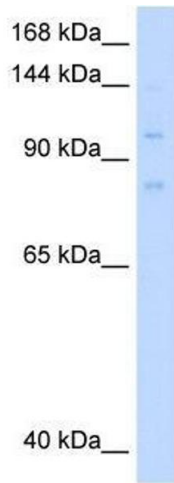
Concentration: Lot specific

Buffer: PBS

Handling Advice: Avoid repeated freeze/thaw cycles.
Dilute only prior to immediate use.

Storage: 4 °C/-20 °C

Storage Comment: Store at 2-8 °C for short periods. For longer periods of storage, store at -20 °C.



Western Blotting

Image 1. MCM8 antibody used at 0.5 ug/ml to detect target protein.