

Datasheet for ABIN634128

anti-RMI1 antibody[Go to Product page](#)**1** Image

Overview

Quantity:	100 µL
Target:	RMI1
Reactivity:	Human, Mouse
Host:	Rabbit
Clonality:	Polyclonal
Conjugate:	This RMI1 antibody is un-conjugated
Application:	Western Blotting (WB)

Product Details

Immunogen:	RMI1 antibody was raised using a synthetic peptide corresponding to a region with amino acids DGILEIPKGEI ¹ NGFYALQINSLVDV ² SQPAYSQIQKLRGKNTTNDLV ³ TAEA
Purification:	Affinity purified

Target Details

Target:	RMI1
Alternative Name:	RMI1 (RMI1 Products)
Background:	RMI1 is an essential component of the RMI complex, a complex that plays an important role in the processing of homologous recombination intermediates to limit DNA crossover formation in cells. RMI1 promotes TOP3A binding to double Holliday junctions (DHJ) and hence stimulates TOP3A-mediated dissolution. RMI1 is required for BLM phosphorylation during mitosis. Within the BLM complex, RMI1 is required for BLM and TOP3A stability.

Target Details

Molecular Weight: 70 kDa (MW of target protein)

Pathways: [DNA Damage Repair](#)

Application Details

Application Notes: WB: 1 µg/mL

Optimal conditions should be determined by the investigator.

Comment: RMI1 Blocking Peptide, catalog no. 33R-1953, is also available for use as a blocking control in assays to test for specificity of this RMI1 antibody

Restrictions: For Research Use only

Handling

Format: Lyophilized

Reconstitution: Lyophilized powder. Add distilled water for a 1 mg/mL concentration of RMI1 antibody in PBS

Concentration: Lot specific

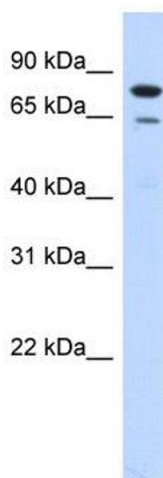
Buffer: PBS

Handling Advice: Avoid repeated freeze/thaw cycles.

Storage: 4 °C/-20 °C

Storage Comment: Store at 2-8 °C for short periods. For longer periods of storage, store at -20 °C.

Images



Western Blotting

Image 1. RMI1 antibody used at 1 µg/ml to detect target protein.