

Datasheet for ABIN634135
anti-KIF25 antibody (N-Term)



[Go to Product page](#)

1 Image

Overview

Quantity:	100 µL
Target:	KIF25
Binding Specificity:	N-Term
Reactivity:	Human
Host:	Rabbit
Clonality:	Polyclonal
Conjugate:	This KIF25 antibody is un-conjugated
Application:	Western Blotting (WB)

Product Details

Immunogen:	KIF25 antibody was raised using the N terminal of KIF25 corresponding to a region with amino acids TWTSGQLQREKQARPGSGAVLAFPDCKDLRVYGPESQSAVFGDVCPLLT
Specificity:	KIF25 antibody was raised against the N terminal of KIF25
Purification:	Affinity purified

Target Details

Target:	KIF25
Alternative Name:	KIF25 (KIF25 Products)
Background:	The protein encoded by the KIF25 gene is a member of the kinesin-like protein family. Protein family members are microtubule-dependent molecular motors that transport organelles within cells and move chromosomes during cell division. However, the particular function of this gene

Target Details

product has not yet been determined. Two alternatively spliced transcript variants which encode products have been described. Other splice variants have been found that lack exon 2 and the initiation codon for translation.

Molecular Weight: 35 kDa (MW of target protein)

Application Details

Application Notes: WB: 1 µg/mL
Optimal conditions should be determined by the investigator.

Comment: KIF25 Blocking Peptide, catalog no. 33R-9383, is also available for use as a blocking control in assays to test for specificity of this KIF25 antibody

Restrictions: For Research Use only

Handling

Format: Lyophilized

Reconstitution: Lyophilized powder. Add distilled water for a 1 mg/mL concentration of KIF25 antibody in PBS

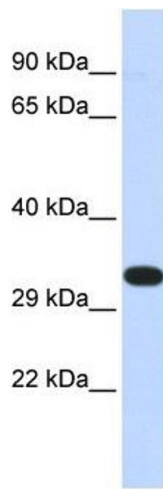
Concentration: Lot specific

Buffer: PBS

Handling Advice: Avoid repeated freeze/thaw cycles.
Dilute only prior to immediate use.

Storage: 4 °C/-20 °C

Storage Comment: Store at 2-8 °C for short periods. For longer periods of storage, store at -20 °C.



Western Blotting

Image 1. KIF25 antibody used at 1 ug/ml to detect target protein.