

Datasheet for ABIN634141  
**anti-Septin 11 antibody (N-Term)**



[Go to Product page](#)

1 Image

## Overview

Quantity:	100 µL
Target:	Septin 11 (SEPT11)
Binding Specificity:	N-Term
Reactivity:	Human, Mouse, Rat
Host:	Rabbit
Clonality:	Polyclonal
Conjugate:	This Septin 11 antibody is un-conjugated
Application:	Western Blotting (WB)

## Product Details

Immunogen:	Septin 11 antibody was raised using the N terminal of 40432 corresponding to a region with amino acids MAVAVGRPSNEELRNLSLSGHVGFDSLDPQLV NKSTSQGFCFNILCVGET
Specificity:	Septin 11 antibody was raised against the N terminal of 40432
Purification:	Affinity purified

## Target Details

Target:	Septin 11 (SEPT11)
Alternative Name:	Septin 11 ( <a href="#">SEPT11 Products</a> )
Background:	SEPT11 belongs to the conserved septin family of filament-forming cytoskeletal GTPases that are involved in a variety of cellular functions including cytokinesis and vesicle trafficking.

## Target Details

---

Molecular Weight: 49 kDa (MW of target protein)

## Application Details

---

Application Notes: WB: 1 µg/mL  
Optimal conditions should be determined by the investigator.

Comment: Septin 11 Blocking Peptide, catalog no. 33R-5793, is also available for use as a blocking control in assays to test for specificity of this Septin 11 antibody

Restrictions: For Research Use only

## Handling

---

Format: Lyophilized

Reconstitution: Lyophilized powder. Add distilled water for a 1 mg/mL concentration of 40787 antibody in PBS

Concentration: Lot specific

Buffer: PBS

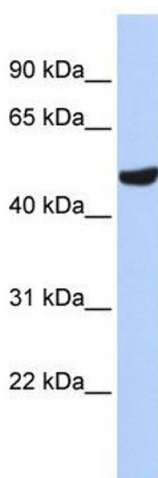
Handling Advice: Avoid repeated freeze/thaw cycles.  
Dilute only prior to immediate use.

Storage: 4 °C/-20 °C

Storage Comment: Store at 2-8 °C for short periods. For longer periods of storage, store at -20 °C.

## Images

---



### Western Blotting

**Image 1.** Septin 11 antibody used at 1 ug/ml to detect target protein.