

Datasheet for ABIN634152 **anti-MSH5 antibody**



[Go to Product page](#)

1 Image

Overview

Quantity:	100 µL
Target:	MSH5
Reactivity:	Human, Rat
Host:	Rabbit
Clonality:	Polyclonal
Conjugate:	This MSH5 antibody is un-conjugated
Application:	Western Blotting (WB)

Product Details

Immunogen:	MSH5 antibody was raised using a synthetic peptide corresponding to a region with amino acids DENMTRFLGKLASQEHREPKRPEIIFLPSVDFGLEISKQRLLSGNYSFIP
Purification:	Affinity purified

Target Details

Target:	MSH5
Alternative Name:	MSH5 (MSH5 Products)
Background:	MSH5 is a member of the mutS family of proteins that are involved in DNA mismatch repair or meiotic recombination processes. This protein is similar to a <i>Saccharomyces cerevisiae</i> protein that participates in meiotic segregation fidelity and crossing-over. This protein forms heterooligomers with another member of this family, mutS homolog 4.
Molecular Weight:	93 kDa (MW of target protein)

Target Details

Pathways: [M Phase](#)

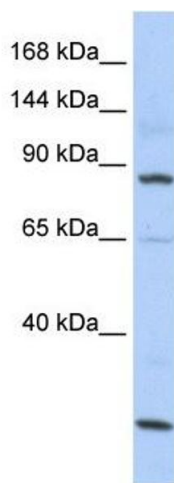
Application Details

Application Notes:	WB: 1 µg/mL Optimal conditions should be determined by the investigator.
Comment:	MSH5 Blocking Peptide, catalog no. 33R-1915, is also available for use as a blocking control in assays to test for specificity of this MSH5 antibody
Restrictions:	For Research Use only

Handling

Format:	Lyophilized
Reconstitution:	Lyophilized powder. Add distilled water for a 1 mg/mL concentration of MSH5 antibody in PBS
Concentration:	Lot specific
Buffer:	PBS
Handling Advice:	Avoid repeated freeze/thaw cycles.
Storage:	4 °C/-20 °C
Storage Comment:	Store at 2-8 °C for short periods. For longer periods of storage, store at -20 °C.

Images



Western Blotting

Image 1. MSH5 antibody used at 1 ug/ml to detect target protein.