

Datasheet for ABIN634156
anti-RBBP6 antibody (N-Term)



[Go to Product page](#)

1 Image

Overview

Quantity:	100 µL
Target:	RBBP6
Binding Specificity:	N-Term
Reactivity:	Human
Host:	Rabbit
Clonality:	Polyclonal
Conjugate:	This RBBP6 antibody is un-conjugated
Application:	Western Blotting (WB)

Product Details

Immunogen:	RBBP6 antibody was raised using the N terminal of RBBP6 corresponding to a region with amino acids APPVSGNPSSAPAPVPDITATVSIHSEKSDGPFRRSDNKILPAAALAS
Specificity:	RBBP6 antibody was raised against the N terminal of RBBP6
Purification:	Affinity purified

Target Details

Target:	RBBP6
Alternative Name:	RBBP6 (RBBP6 Products)
Background:	The retinoblastoma tumor suppressor (pRB) protein binds with many other proteins. In various human cancers, pRB suppresses cellular proliferation and is inactivated. Cell cycle-dependent phosphorylation regulates the activity of pRB.

Target Details

Molecular Weight: 201 kDa (MW of target protein)

Pathways: [Regulatory RNA Pathways](#)

Application Details

Application Notes: WB: 1 µg/mL

Optimal conditions should be determined by the investigator.

Comment: RBBP6 Blocking Peptide, catalog no. 33R-1433, is also available for use as a blocking control in assays to test for specificity of this RBBP6 antibody

Restrictions: For Research Use only

Handling

Format: Lyophilized

Reconstitution: Lyophilized powder. Add distilled water for a 1 mg/mL concentration of RBBP6 antibody in PBS

Concentration: Lot specific

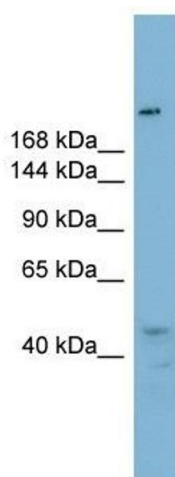
Buffer: PBS

Handling Advice: Avoid repeated freeze/thaw cycles.
Dilute only prior to immediate use.

Storage: 4 °C/-20 °C

Storage Comment: Store at 2-8 °C for short periods. For longer periods of storage, store at -20 °C.

Images



Western Blotting

Image 1. RBBP6 antibody used at 1 µg/ml to detect target protein.