

Datasheet for ABIN634171 **anti-CHEK1 antibody**

2 Images



[Go to Product page](#)

Overview

Quantity:	100 µL
Target:	CHEK1
Reactivity:	Human, Mouse, Rat, Dog
Host:	Rabbit
Clonality:	Polyclonal
Conjugate:	This CHEK1 antibody is un-conjugated
Application:	Western Blotting (WB), Immunohistochemistry (IHC)

Product Details

Immunogen:	CHEK1 antibody was raised using a synthetic peptide corresponding to a region with amino acids WSCGIVLTAMLGELPWDQPSDSCQEYSDWKEKKTYLNPWKKIDSAPLAL
Purification:	Affinity purified

Target Details

Target:	CHEK1
Alternative Name:	CHEK1 (CHEK1 Products)
Background:	CHEK1 is required during normal S phase to avoid aberrantly increased initiation of DNA replication, thereby protecting against DNA breakage. Its expression is dispensable for somatic cell death and critical for sustaining G2 DNA damage checkpoint.
Molecular Weight:	54 kDa (MW of target protein)
Pathways:	p53 Signaling , Apoptosis , Cell Division Cycle , DNA Damage Repair

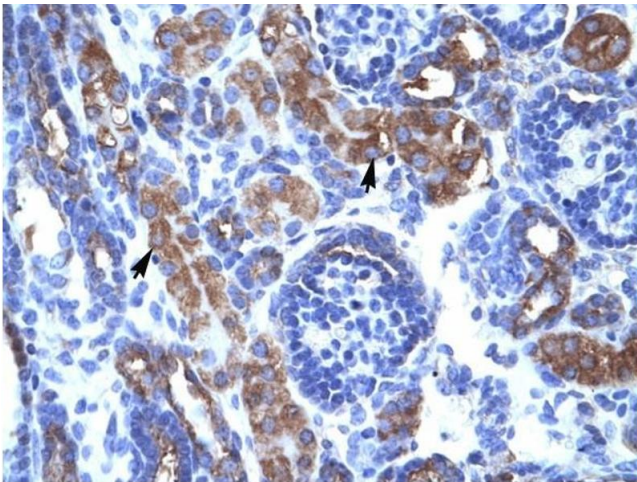
Application Details

Application Notes:	WB: 0.5 µg/mL, IHC: 4-8 µg/mL Optimal conditions should be determined by the investigator.
Comment:	CHEK1 Blocking Peptide, catalog no. 33R-10008, is also available for use as a blocking control in assays to test for specificity of this CHEK1 antibody
Restrictions:	For Research Use only

Handling

Format:	Lyophilized
Reconstitution:	Lyophilized powder. Add distilled water for a 1 mg/mL concentration of CHEK1 antibody in PBS
Concentration:	Lot specific
Buffer:	PBS
Handling Advice:	Avoid repeated freeze/thaw cycles.
Storage:	4 °C/-20 °C
Storage Comment:	Store at 2-8 °C for short periods. For longer periods of storage, store at -20 °C.

Images



Immunohistochemistry

Image 1. CHEK1 antibody was used for immunohistochemistry at a concentration of 4-8 ug/ml to stain Epithelial cells of renal tubule (arrows) in Human Kidney. Magnification is at 400X



Western Blotting

Image 2. CHEK1 antibody used at 0.5 ug/ml to detect target protein.