

Datasheet for ABIN634172  
**anti-KIF5B antibody (N-Term)**



[Go to Product page](#)

2 Images

## Overview

Quantity:	100 µL
Target:	KIF5B
Binding Specificity:	N-Term
Reactivity:	Human
Host:	Rabbit
Clonality:	Polyclonal
Conjugate:	This KIF5B antibody is un-conjugated
Application:	Western Blotting (WB), Immunohistochemistry (IHC)

## Product Details

Immunogen:	KIF5 B antibody was raised using the N terminal of KIF5 corresponding to a region with amino acids CNIKVMCRFRPLNESEVNRGDKYIAKFQGEDTVVIASKPYAFDRVFQSST
Specificity:	KIF5 B antibody was raised against the N terminal of KIF5
Purification:	Affinity purified

## Target Details

Target:	KIF5B
Alternative Name:	KIF5B ( <a href="#">KIF5B Products</a> )
Background:	Kinesin is the founding member of a superfamily of microtubule based motor proteins that perform force-generating tasks such as organelle transport and chromosome segregation. Kinesin consists of heavy and light chains both of which have been documented to bind a

## Target Details

---

variety of potential linker or cargo proteins. KIF5B is an isoform of kinesin heavy chain.

Molecular Weight: 110 kDa (MW of target protein)

Pathways: [Peptide Hormone Metabolism](#), [Ribonucleoprotein Complex Subunit Organization](#)

## Application Details

---

Application Notes: WB: 0.5 µg/mL, IHC: 4-8 µg/mL  
Optimal conditions should be determined by the investigator.

Comment: KIF5B Blocking Peptide, catalog no. 33R-1753, is also available for use as a blocking control in assays to test for specificity of this KIF5B antibody

Restrictions: For Research Use only

## Handling

---

Format: Lyophilized

Reconstitution: Lyophilized powder. Add distilled water for a 1 mg/mL concentration of KIF0 antibody in PBS

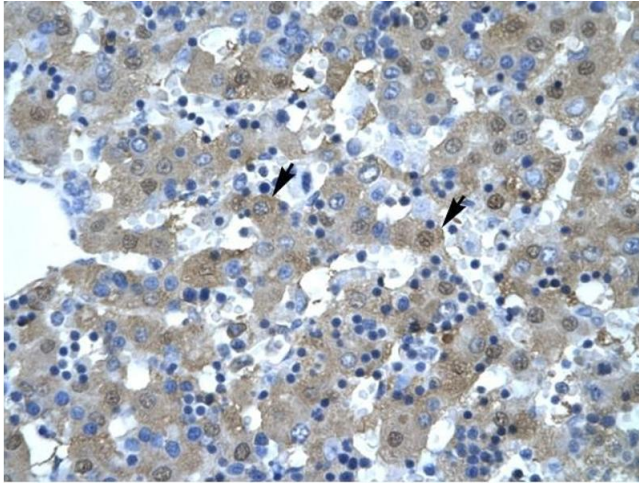
Concentration: Lot specific

Buffer: PBS

Handling Advice: Avoid repeated freeze/thaw cycles.  
Dilute only prior to immediate use.

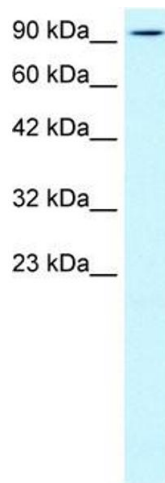
Storage: 4 °C/-20 °C

Storage Comment: Store at 2-8 °C for short periods. For longer periods of storage, store at -20 °C.



### Immunohistochemistry

**Image 1.** KIF5B antibody was used for immunohistochemistry at a concentration of 4-8 ug/ml to stain Hepatocytes (arrows) in Human Liver. Magnification is at 400X



### Western Blotting

**Image 2.** KIF5B antibody used at 0.5 ug/ml to detect target protein.