

Datasheet for ABIN634173 **anti-KIFC3 antibody (C-Term)**



[Go to Product page](#)

1 Image

Overview

Quantity:	100 µL
Target:	KIFC3
Binding Specificity:	C-Term
Reactivity:	Human
Host:	Rabbit
Clonality:	Polyclonal
Conjugate:	This KIFC3 antibody is un-conjugated
Application:	Western Blotting (WB)

Product Details

Immunogen:	KIFC3 antibody was raised using the C terminal of KIFC3 corresponding to a region with amino acids EHLEWEPACQTPQPSARAH SAPSSGTSSRPGSIRRKLQPSGKSRPLPV
Specificity:	KIFC3 antibody was raised against the C terminal of KIFC3
Purification:	Affinity purified

Target Details

Target:	KIFC3
Alternative Name:	KIFC3 (KIFC3 Products)
Background:	KIFC3 belongs to the kinesin-like protein family. It contains 1 kinesin-motor domain. KIFC3 is the minus-end microtubule-dependent motor protein. It is involved in apically targeted transport.

Target Details

Molecular Weight: 93 kDa (MW of target protein)

Pathways: [Cell-Cell Junction Organization](#)

Application Details

Application Notes: WB: 1 µg/mL
Optimal conditions should be determined by the investigator.

Comment: KIFC3 Blocking Peptide, catalog no. 33R-2452, is also available for use as a blocking control in assays to test for specificity of this KIFC3 antibody

Restrictions: For Research Use only

Handling

Format: Lyophilized

Reconstitution: Lyophilized powder. Add distilled water for a 1 mg/mL concentration of KIFC3 antibody in PBS

Concentration: Lot specific

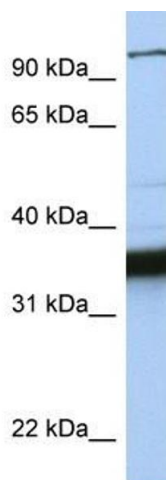
Buffer: PBS

Handling Advice: Avoid repeated freeze/thaw cycles.
Dilute only prior to immediate use.

Storage: 4 °C/-20 °C

Storage Comment: Store at 2-8 °C for short periods. For longer periods of storage, store at -20 °C.

Images



Western Blotting

Image 1. KIFC3 antibody used at 1 µg/ml to detect target protein.