

Datasheet for ABIN634184

**anti-Retinoblastoma Binding Protein 4 antibody (N-Term)**[Go to Product page](#)**1** Image

## Overview

Quantity:	100 µL
Target:	Retinoblastoma Binding Protein 4 (RBBP4)
Binding Specificity:	N-Term
Reactivity:	Human, Mouse, Rat
Host:	Rabbit
Clonality:	Polyclonal
Conjugate:	This Retinoblastoma Binding Protein 4 antibody is un-conjugated
Application:	Western Blotting (WB)

## Product Details

Immunogen:	RBBP4 antibody was raised using the N terminal of RBBP4 corresponding to a region with amino acids HTSDEQNHVLVIASVQLPNDDAQFDASHYDSEKGEFGGFGSVSGKIEIEIK
Specificity:	RBBP4 antibody was raised against the N terminal of RBBP4
Purification:	Affinity purified

## Target Details

Target:	Retinoblastoma Binding Protein 4 (RBBP4)
Alternative Name:	RBBP4 ( <a href="#">RBBP4 Products</a> )
Background:	This gene encodes a ubiquitously expressed nuclear protein which belongs to a highly conserved subfamily of WD-repeat proteins. It is present in protein complexes involved in histone acetylation and chromatin assembly.

## Target Details

---

Molecular Weight:	48 kDa (MW of target protein)
Pathways:	<a href="#">Cell Division Cycle</a> , <a href="#">Mitotic G1-G1/S Phases</a> , <a href="#">Stem Cell Maintenance</a> , <a href="#">Chromatin Binding</a> , <a href="#">Protein targeting to Nucleus</a>

## Application Details

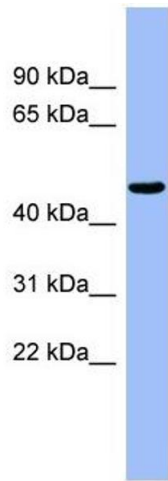
---

Application Notes:	WB: 1 µg/mL Optimal conditions should be determined by the investigator.
Comment:	RBBP4 Blocking Peptide, catalog no. 33R-3865, is also available for use as a blocking control in assays to test for specificity of this RBBP4 antibody
Restrictions:	For Research Use only

## Handling

---

Format:	Lyophilized
Reconstitution:	Lyophilized powder. Add distilled water for a 1 mg/mL concentration of RBBP4 antibody in PBS
Concentration:	Lot specific
Buffer:	PBS
Handling Advice:	Avoid repeated freeze/thaw cycles. Dilute only prior to immediate use.
Storage:	4 °C/-20 °C
Storage Comment:	Store at 2-8 °C for short periods. For longer periods of storage, store at -20 °C.



### Western Blotting

**Image 1.** RBBP4 antibody used at 1 ug/ml to detect target protein.