

Datasheet for ABIN634186
anti-KIF3C antibody (Middle Region)



[Go to Product page](#)

1 Image

Overview

| | |
|----------------------|--------------------------------------|
| Quantity: | 100 µL |
| Target: | KIF3C |
| Binding Specificity: | Middle Region |
| Reactivity: | Human, Mouse, Rat, Dog |
| Host: | Rabbit |
| Clonality: | Polyclonal |
| Conjugate: | This KIF3C antibody is un-conjugated |
| Application: | Western Blotting (WB) |

Product Details

| | |
|---------------|--|
| Immunogen: | KIF3 C antibody was raised using the middle region of KIF3 corresponding to a region with amino acids LQEQKERLEEEKAAIQDDRSLVSEEEKQLLEEKEKMLEDLRREQQATELL |
| Specificity: | KIF3 C antibody was raised against the middle region of KIF3 |
| Purification: | Affinity purified |

Target Details

| | |
|-------------------|---|
| Target: | KIF3C |
| Alternative Name: | KIF3C (KIF3C Products) |
| Background: | KIF3C is a member of KIF3 family. It is highly enriched in neural tissues such as brain, spinal cord, and retina. It is an anterograde motor. |

Target Details

Molecular Weight: 89 kDa (MW of target protein)

Pathways: [Hedgehog Signaling](#)

Application Details

Application Notes: WB: 0.2 µg/mL

Optimal conditions should be determined by the investigator.

Comment: KIF3C Blocking Peptide, catalog no. 33R-5305, is also available for use as a blocking control in assays to test for specificity of this KIF3C antibody

Restrictions: For Research Use only

Handling

Format: Lyophilized

Reconstitution: Lyophilized powder. Add distilled water for a 1 mg/mL concentration of KIF0 antibody in PBS

Concentration: Lot specific

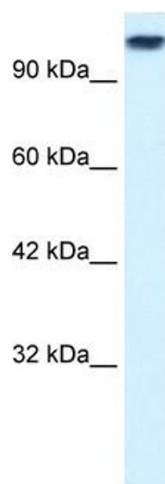
Buffer: PBS

Handling Advice: Avoid repeated freeze/thaw cycles.
Dilute only prior to immediate use.

Storage: 4 °C/-20 °C

Storage Comment: Store at 2-8 °C for short periods. For longer periods of storage, store at -20 °C.

Images



Western Blotting

Image 1. KIF3C antibody used at 0.2 µg/ml to detect target protein.