

Datasheet for ABIN634189
anti-ANAPC10 antibody (N-Term)



[Go to Product page](#)

1 Image

Overview

Quantity:	100 µL
Target:	ANAPC10
Binding Specificity:	N-Term
Reactivity:	Human, Mouse, Rat
Host:	Rabbit
Clonality:	Polyclonal
Conjugate:	This ANAPC10 antibody is un-conjugated
Application:	Western Blotting (WB)

Product Details

Immunogen:	ANAPC10 antibody was raised using the N terminal of ANAPC10 corresponding to a region with amino acids MTTPNKTPPGADPKQLERTGTVREIGSQAVVWSLSSCKPGFGVDQLRDDNL
Specificity:	ANAPC10 antibody was raised against the N terminal of ANAPC10
Purification:	Affinity purified

Target Details

Target:	ANAPC10
Alternative Name:	ANAPC10 (ANAPC10 Products)
Background:	ANAPC10 is a component of the anaphase promoting complex/cyclosome (APC/C), a cell cycle-regulated E3 ubiquitin ligase that controls progression through mitosis and the G1 phase of the cell cycle.

Target Details

Molecular Weight: 21 kDa (MW of target protein)

Pathways: [M Phase](#)

Application Details

Application Notes: WB: 1 µg/mL
Optimal conditions should be determined by the investigator.

Comment: ANAPC10 Blocking Peptide, catalog no. 33R-6569, is also available for use as a blocking control in assays to test for specificity of this ANAPC10 antibody

Restrictions: For Research Use only

Handling

Format: Lyophilized

Reconstitution: Lyophilized powder. Add distilled water for a 1 mg/mL concentration of ANAPC10 antibody in PBS

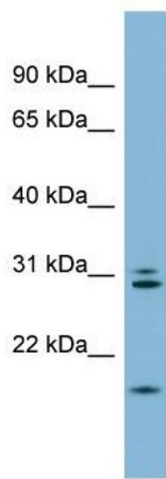
Concentration: Lot specific

Buffer: PBS

Handling Advice: Avoid repeated freeze/thaw cycles.
Dilute only prior to immediate use.

Storage: 4 °C/-20 °C

Storage Comment: Store at 2-8 °C for short periods. For longer periods of storage, store at -20 °C.



Western Blotting

Image 1. ANAPC10 antibody used at 1 ug/ml to detect target protein.