

Datasheet for ABIN634191
anti-SET/TAF-I antibody (N-Term)



[Go to Product page](#)

1 Image

Overview

Quantity:	100 µL
Target:	SET/TAF-I (SET)
Binding Specificity:	N-Term
Reactivity:	Human, Mouse, Rat
Host:	Rabbit
Clonality:	Polyclonal
Conjugate:	This SET/TAF-I antibody is un-conjugated
Application:	Western Blotting (WB)

Product Details

Immunogen:	SET antibody was raised using the N terminal of SET corresponding to a region with amino acids IDEVQNEIDRLNEQASEEILKVEQKYNKLRQPFFQKRSELIAKIPNFVWT
Specificity:	SET antibody was raised against the N terminal of SET
Purification:	Affinity purified

Target Details

Target:	SET/TAF-I (SET)
Alternative Name:	SET (SET Products)
Background:	SET is a multitasking protein, involved in apoptosis, transcription, nucleosome assembly and histone binding. Isoform 2 anti-apoptotic activity is mediated by inhibition of the GZMA-activated DNase, NME1.

Target Details

Molecular Weight: 32 kDa (MW of target protein)

Pathways: [Apoptosis](#)

Application Details

Application Notes: WB: 1 µg/mL

Optimal conditions should be determined by the investigator.

Comment: SET Blocking Peptide, catalog no. 33R-3911, is also available for use as a blocking control in assays to test for specificity of this SET antibody

Restrictions: For Research Use only

Handling

Format: Lyophilized

Reconstitution: Lyophilized powder. Add distilled water for a 1 mg/mL concentration of SET antibody in PBS

Concentration: Lot specific

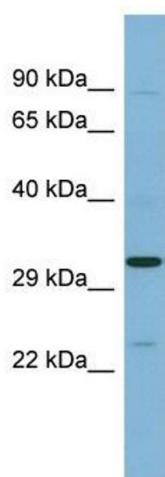
Buffer: PBS

Handling Advice: Avoid repeated freeze/thaw cycles.
Dilute only prior to immediate use.

Storage: 4 °C/-20 °C

Storage Comment: Store at 2-8 °C for short periods. For longer periods of storage, store at -20 °C.

Images



Western Blotting

Image 1. SET antibody used at 1 µg/ml to detect target protein.