

Datasheet for ABIN634205
anti-Septin 2 antibody (N-Term)



[Go to Product page](#)

1 Image

Overview

Quantity:	100 µL
Target:	Septin 2 (SEPT2)
Binding Specificity:	N-Term
Reactivity:	Human, Mouse, Rat
Host:	Rabbit
Clonality:	Polyclonal
Conjugate:	This Septin 2 antibody is un-conjugated
Application:	Western Blotting (WB)

Product Details

Immunogen:	Septin 2 antibody was raised using the N terminal of 40423 corresponding to a region with amino acids MSKQQPTQFINPETPGYVGFANLPNQVHRKSVKKGFEFTLMVVGESGLGK
Specificity:	Septin 2 antibody was raised against the N terminal of 40423
Purification:	Affinity purified

Target Details

Target:	Septin 2 (SEPT2)
Alternative Name:	Septin 2 (SEPT2 Products)
Background:	SEPT2 is required for normal progress through mitosis. SEPT2 is involved in cytokinesis.
Molecular Weight:	41 kDa (MW of target protein)

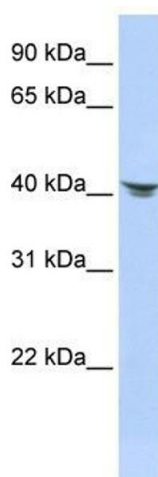
Application Details

Application Notes:	WB: 1 µg/mL Optimal conditions should be determined by the investigator.
Comment:	Septin 2 Blocking Peptide, catalog no. 33R-6451, is also available for use as a blocking control in assays to test for specificity of this Septin 2 antibody
Restrictions:	For Research Use only

Handling

Format:	Lyophilized
Reconstitution:	Lyophilized powder. Add distilled water for a 1 mg/mL concentration of 37500 antibody in PBS
Concentration:	Lot specific
Buffer:	PBS
Handling Advice:	Avoid repeated freeze/thaw cycles. Dilute only prior to immediate use.
Storage:	4 °C/-20 °C
Storage Comment:	Store at 2-8 °C for short periods. For longer periods of storage, store at -20 °C.

Images



Western Blotting

Image 1. Septin 2 antibody used at 1 ug/ml to detect target protein.