

Datasheet for ABIN634213  
**anti-TUBE1 antibody (Middle Region)**



[Go to Product page](#)

1 Image

## Overview

Quantity:	100 µL
Target:	TUBE1
Binding Specificity:	Middle Region
Reactivity:	Human, Mouse, Rat
Host:	Rabbit
Clonality:	Polyclonal
Conjugate:	This TUBE1 antibody is un-conjugated
Application:	Western Blotting (WB)

## Product Details

Immunogen:	Epsilon Tubulin 1 antibody was raised using the middle region of TUBE1 corresponding to a region with amino acids HLHHYLQVEGMEESCFTAVSSLSALIQEYDQLDATKNMPVQDLPRLSIA
Specificity:	Epsilon Tubulin 1 antibody was raised against the middle region of TUBE1
Purification:	Affinity purified

## Target Details

Target:	TUBE1
Alternative Name:	epsilon Tubulin 1 ( <a href="#">TUBE1 Products</a> )
Background:	This gene encodes a member of the tubulin superfamily. This protein localizes to the centriolar sub-distal appendages that are associated with the older of the two centrioles after centrosome duplication.

## Target Details

Molecular Weight: 53 kDa (MW of target protein)

Pathways: [Microtubule Dynamics](#)

## Application Details

Application Notes: WB: 1 µg/mL

Optimal conditions should be determined by the investigator.

Comment: Epsilon Tubulin 1 Blocking Peptide, catalog no. 33R-3777, is also available for use as a blocking control in assays to test for specificity of this Epsilon Tubulin 1 antibody

Restrictions: For Research Use only

## Handling

Format: Lyophilized

Reconstitution: Lyophilized powder. Add distilled water for a 1 mg/mL concentration of TUBE1 antibody in PBS

Concentration: Lot specific

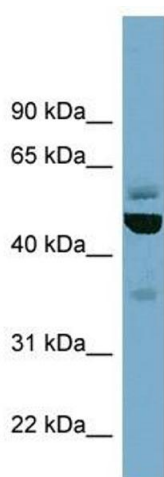
Buffer: PBS

Handling Advice: Avoid repeated freeze/thaw cycles.  
Dilute only prior to immediate use.

Storage: 4 °C/-20 °C

Storage Comment: Store at 2-8 °C for short periods. For longer periods of storage, store at -20 °C.

## Images



### Western Blotting

**Image 1.** Epsilon Tubulin 1 antibody used at 1 µg/ml to detect target protein.