

Datasheet for ABIN634217
anti-DKC1 antibody (N-Term)



[Go to Product page](#)

1 Image

Overview

Quantity:	100 µL
Target:	DKC1
Binding Specificity:	N-Term
Reactivity:	Human
Host:	Rabbit
Clonality:	Polyclonal
Conjugate:	This DKC1 antibody is un-conjugated
Application:	Western Blotting (WB)

Product Details

Immunogen:	DKC1 antibody was raised using the N terminal of DKC1 corresponding to a region with amino acids EFLIKPESKVAKLDTSQWPLLLKNFDKLNVRTTHYTPLACGSNPLKREIG
Specificity:	DKC1 antibody was raised against the N terminal of DKC1
Purification:	Affinity purified

Target Details

Target:	DKC1
Alternative Name:	DKC1 (DKC1 Products)
Background:	This gene is a member of the H/ACA snoRNPs (small nucleolar ribonucleoproteins) gene family. snoRNPs are involved in various aspects of rRNA processing and modification and have been classified into two families: C/D and H/ACA.

Target Details

Molecular Weight: 58 kDa (MW of target protein)

Pathways: [Telomere Maintenance](#)

Application Details

Application Notes: WB: 1 µg/mL

Optimal conditions should be determined by the investigator.

Comment: DKC1 Blocking Peptide, catalog no. 33R-2407, is also available for use as a blocking control in assays to test for specificity of this DKC1 antibody

Restrictions: For Research Use only

Handling

Format: Lyophilized

Reconstitution: Lyophilized powder. Add distilled water for a 1 mg/mL concentration of DKC1 antibody in PBS

Concentration: Lot specific

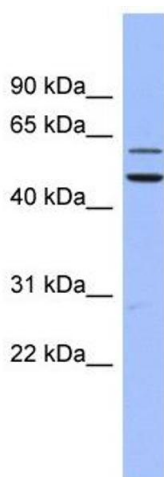
Buffer: PBS

Handling Advice: Avoid repeated freeze/thaw cycles.
Dilute only prior to immediate use.

Storage: 4 °C/-20 °C

Storage Comment: Store at 2-8 °C for short periods. For longer periods of storage, store at -20 °C.

Images



Western Blotting

Image 1. DKC1 antibody used at 1 µg/ml to detect target protein.