

Datasheet for ABIN634223  
**anti-RNASEH2A antibody (C-Term)**



[Go to Product page](#)

2 Images

## Overview

Quantity:	100 µL
Target:	RNASEH2A
Binding Specificity:	C-Term
Reactivity:	Human
Host:	Rabbit
Clonality:	Polyclonal
Conjugate:	This RNASEH2A antibody is un-conjugated
Application:	Western Blotting (WB), Immunohistochemistry (IHC)

## Product Details

Immunogen:	RNASEH2 A antibody was raised using the C terminal of RNASEH2 corresponding to a region with amino acids EKEAEDVIWEDSASENQEGLRKITSYFLNEGSQARPRSSHRYFLERGLS
Specificity:	RNASEH2 A antibody was raised against the C terminal of RNASEH2
Purification:	Affinity purified

## Target Details

Target:	RNASEH2A
Alternative Name:	RNASEH2A ( <a href="#">RNASEH2A Products</a> )
Background:	Of the multiple RNases H in mammals, RNase HI is the major enzyme and shows increased activity during DNA replication. It shows more homology to the RNase HII of Escherichia coli.

## Target Details

Molecular Weight: 33 kDa (MW of target protein)

## Application Details

Application Notes: WB: 0.25 µg/mL, IHC: 4-8 µg/mL  
Optimal conditions should be determined by the investigator.

Comment: RNASEH2A Blocking Peptide, catalog no. 33R-2500, is also available for use as a blocking control in assays to test for specificity of this RNASEH2A antibody

Restrictions: For Research Use only

## Handling

Format: Lyophilized

Reconstitution: Lyophilized powder. Add distilled water for a 1 mg/mL concentration of RNASEH0 antibody in PBS

Concentration: Lot specific

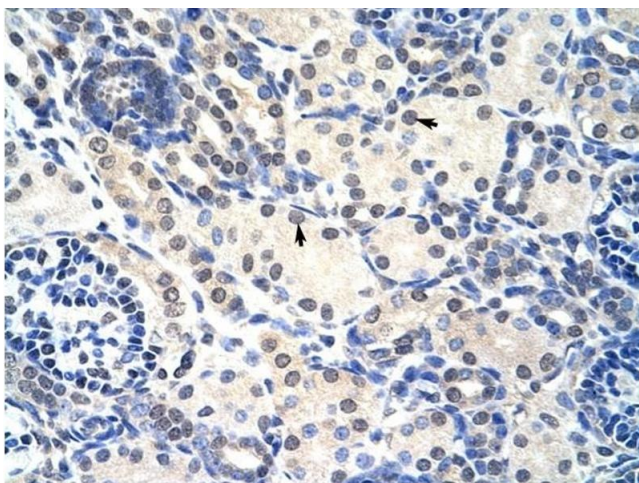
Buffer: PBS

Handling Advice: Avoid repeated freeze/thaw cycles.  
Dilute only prior to immediate use.

Storage: 4 °C/-20 °C

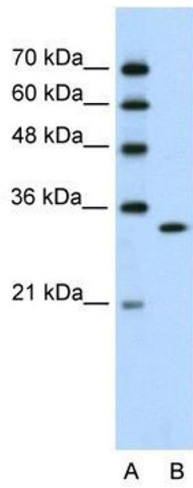
Storage Comment: Store at 2-8 °C for short periods. For longer periods of storage, store at -20 °C.

## Images



### Immunohistochemistry

**Image 1.** RNASEH2A antibody was used for immunohistochemistry at a concentration of 4-8 ug/ml to stain Epithelial cells of renal tubule (arrows) in Human Kidney. Magnification is at 400X



### Western Blotting

**Image 2.** RNASEH2A antibody used at 0.25 ug/ml to detect target protein.