

Datasheet for ABIN634235
anti-Kallikrein 10 antibody (N-Term)



[Go to Product page](#)

1 Image

Overview

Quantity:	100 µL
Target:	Kallikrein 10 (KLK10)
Binding Specificity:	N-Term
Reactivity:	Human
Host:	Rabbit
Clonality:	Polyclonal
Conjugate:	This Kallikrein 10 antibody is un-conjugated
Application:	Western Blotting (WB)

Product Details

Immunogen:	KLK10 antibody was raised using the N terminal of KLK10 corresponding to a region with amino acids LLPQNDTRLDP EAYGSPCARGSQPWQVSLFNGLSFHCAGVLVDQSWLTA
Specificity:	KLK10 antibody was raised against the N terminal of KLK10
Purification:	Affinity purified

Target Details

Target:	Kallikrein 10 (KLK10)
Alternative Name:	KLK10 (KLK10 Products)
Background:	Kallikreins are a subgroup of serine proteases having diverse physiological functions. Growing evidence suggests that many kallikreins are implicated in carcinogenesis and some have potential as novel cancer and other disease biomarkers.

Target Details

Molecular Weight: 30 kDa (MW of target protein)

Pathways: [Complement System](#)

Application Details

Application Notes: WB: 1 µg/mL

Optimal conditions should be determined by the investigator.

Comment: KLK10 Blocking Peptide, catalog no. 33R-5176, is also available for use as a blocking control in assays to test for specificity of this KLK10 antibody

Restrictions: For Research Use only

Handling

Format: Lyophilized

Reconstitution: Lyophilized powder. Add distilled water for a 1 mg/mL concentration of KLK10 antibody in PBS

Concentration: Lot specific

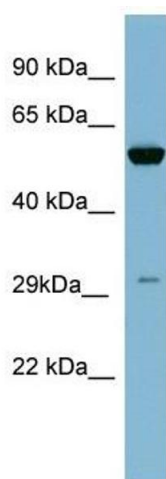
Buffer: PBS

Handling Advice: Avoid repeated freeze/thaw cycles.
Dilute only prior to immediate use.

Storage: 4 °C/-20 °C

Storage Comment: Store at 2-8 °C for short periods. For longer periods of storage, store at -20 °C.

Images



Western Blotting

Image 1. KLK10 antibody used at 1 µg/ml to detect target protein.