

Datasheet for ABIN634240  
**anti-TLK1 antibody (N-Term)**



[Go to Product page](#)

1 Image

## Overview

Quantity:	100 µL
Target:	TLK1
Binding Specificity:	N-Term
Reactivity:	Human
Host:	Rabbit
Clonality:	Polyclonal
Conjugate:	This TLK1 antibody is un-conjugated
Application:	Western Blotting (WB)

## Product Details

Immunogen:	TLK1 antibody was raised using the N terminal of TLK1 corresponding to a region with amino acids ESETPEKKQSESSRGRKRKAENQNESSQGKSIGGRGHKISDYFEYQGNG
Specificity:	TLK1 antibody was raised against the N terminal of TLK1
Purification:	Affinity purified

## Target Details

Target:	TLK1
Alternative Name:	TLK1 ( <a href="#">TLK1 Products</a> )
Background:	The Tousel-like kinases, first described in Arabadopsis, are nuclear serine/threonine kinases that are potentially involved in the regulation of chromatin assembly.

## Target Details

---

Molecular Weight: 84 kDa (MW of target protein)

## Application Details

---

Application Notes: WB: 1 µg/mL  
Optimal conditions should be determined by the investigator.

Comment: TLK1 Blocking Peptide, catalog no. 33R-2724, is also available for use as a blocking control in assays to test for specificity of this TLK1 antibody

Restrictions: For Research Use only

## Handling

---

Format: Lyophilized

Reconstitution: Lyophilized powder. Add distilled water for a 1 mg/mL concentration of TLK1 antibody in PBS

Concentration: Lot specific

Buffer: PBS

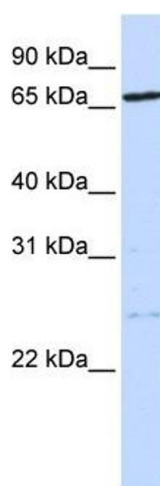
Handling Advice: Avoid repeated freeze/thaw cycles.  
Dilute only prior to immediate use.

Storage: 4 °C/-20 °C

Storage Comment: Store at 2-8 °C for short periods. For longer periods of storage, store at -20 °C.

## Images

---



### Western Blotting

**Image 1.** TLK1 antibody used at 1 ug/ml to detect target protein.