

Datasheet for ABIN634243  
**anti-KIF13B antibody (N-Term)**



[Go to Product page](#)

2 Images

## Overview

Quantity:	100 µL
Target:	KIF13B
Binding Specificity:	N-Term
Reactivity:	Human, Mouse, Rat
Host:	Rabbit
Clonality:	Polyclonal
Conjugate:	This KIF13B antibody is un-conjugated
Application:	Western Blotting (WB)

## Product Details

Immunogen:	KIF13 B antibody was raised using the N terminal of KIF13 corresponding to a region with amino acids SGKSYTMMGTADQPGLIPRLCSGLFERTQKEENEEQSFKVEVSYMEIYNE
Specificity:	KIF13 B antibody was raised against the N terminal of KIF13
Purification:	Affinity purified

## Target Details

Target:	KIF13B
Alternative Name:	KIF13B ( <a href="#">KIF13B Products</a> )
Background:	KIF13B may be involved in reorganization of the cortical cytoskeleton. KIF13B may be functionally important for the intracellular trafficking of MAGUKs and associated protein complexes.

## Target Details

---

Molecular Weight: 203 kDa (MW of target protein)

## Application Details

---

Application Notes: WB: 1 µg/mL  
Optimal conditions should be determined by the investigator.

Comment: KIF13B Blocking Peptide, catalog no. 33R-8472, is also available for use as a blocking control in assays to test for specificity of this KIF13B antibody

Restrictions: For Research Use only

## Handling

---

Format: Lyophilized

Reconstitution: Lyophilized powder. Add distilled water for a 1 mg/mL concentration of KIF10 antibody in PBS

Concentration: Lot specific

Buffer: PBS

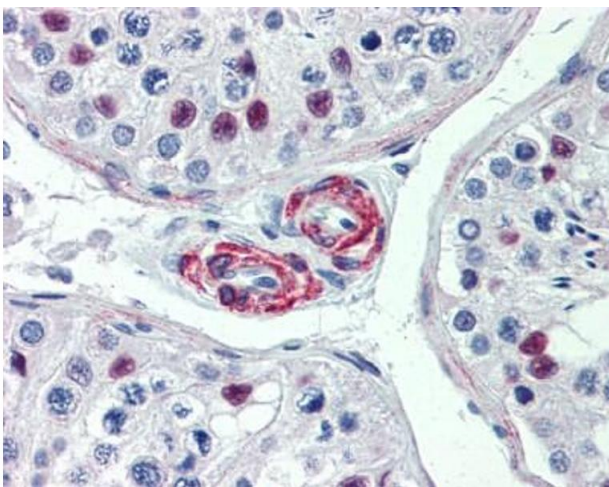
Handling Advice: Avoid repeated freeze/thaw cycles.  
Dilute only prior to immediate use.

Storage: 4 °C/-20 °C

Storage Comment: Store at 2-8 °C for short periods. For longer periods of storage, store at -20 °C.

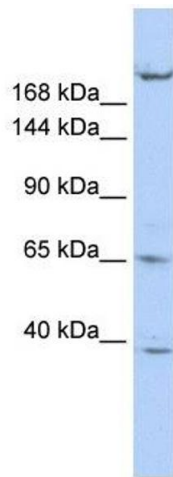
## Images

---



### Immunohistochemistry

**Image 1.** KIF13B antibody was used for immunohistochemistry at a concentration of 4-8 µg/ml. Magnification is at 400X



### Western Blotting

**Image 2.** KIF13B antibody used at 1 ug/ml to detect target protein.