

Datasheet for ABIN634247
anti-KHDRBS1 antibody (N-Term)



[Go to Product page](#)

1 Image

Overview

| | |
|----------------------|--|
| Quantity: | 100 µL |
| Target: | KHDRBS1 |
| Binding Specificity: | N-Term |
| Reactivity: | Human |
| Host: | Rabbit |
| Clonality: | Polyclonal |
| Conjugate: | This KHDRBS1 antibody is un-conjugated |
| Application: | Western Blotting (WB) |

Product Details

| | |
|---------------|--|
| Immunogen: | KHDRBS1 antibody was raised using the N terminal of KHDRBS1 corresponding to a region with amino acids LPELMAEKDSLDPSTHAMQLLTAEIEKIQKGDSKKDDEENYLDLFSHKN |
| Specificity: | KHDRBS1 antibody was raised against the N terminal of KHDRBS1 |
| Purification: | Affinity purified |

Target Details

| | |
|-------------------|---|
| Target: | KHDRBS1 |
| Alternative Name: | KHDRBS1 (KHDRBS1 Products) |
| Background: | KHDRBS1 recruited and tyrosine phosphorylated by several receptor systems, for example the T-cell, leptin and insulin receptors. Once phosphorylated, KHDRBS1 functions as an adapter protein in signal transduction cascades by binding to SH2 and SH3 domain-containing proteins. |

Target Details

KHDRBS1 play a role in G2-M progression in the cell cycle. It represses CBP-dependent transcriptional activation apparently by competing with other nuclear factors for binding to CBP. KHDRBS1 also acts as a putative regulator of mRNA stability and/or translation rates and mediates mRNA nuclear export.

Molecular Weight: 48 kDa (MW of target protein)

Pathways: [NF-kappaB Signaling](#), [Neurotrophin Signaling Pathway](#), [Autophagy](#)

Application Details

Application Notes: WB: 1 µg/mL
Optimal conditions should be determined by the investigator.

Comment: KHDRBS1 Blocking Peptide, catalog no. 33R-5263, is also available for use as a blocking control in assays to test for specificity of this KHDRBS1 antibody

Restrictions: For Research Use only

Handling

Format: Lyophilized

Reconstitution: Lyophilized powder. Add distilled water for a 1 mg/mL concentration of KHDRBS1 antibody in PBS

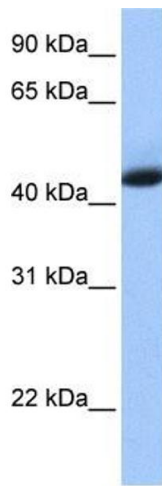
Concentration: Lot specific

Buffer: PBS

Handling Advice: Avoid repeated freeze/thaw cycles.
Dilute only prior to immediate use.

Storage: 4 °C/-20 °C

Storage Comment: Store at 2-8 °C for short periods. For longer periods of storage, store at -20 °C.



Western Blotting

Image 1. KHDRBS1 antibody used at 1 ug/ml to detect target protein.