

Datasheet for ABIN634258  
**anti-Presenilin 2 antibody**



[Go to Product page](#)

2 Images

## Overview

Quantity:	100 µL
Target:	Presenilin 2 (PSEN2)
Reactivity:	Human, Rat, Mouse, Dog
Host:	Rabbit
Clonality:	Polyclonal
Conjugate:	This Presenilin 2 antibody is un-conjugated
Application:	Western Blotting (WB), Immunohistochemistry (IHC)

## Product Details

Immunogen:	Presenilin 2 antibody was raised using a synthetic peptide corresponding to a region with amino acids VVATIKSVRFYTEKNGQLIYTPFTEDTPSVGQRLNLSVLNLTLMISVIV
Purification:	Affinity purified

## Target Details

Target:	Presenilin 2 (PSEN2)
Alternative Name:	Presenilin 2 ( <a href="#">PSEN2 Products</a> )
Background:	Alzheimer's disease (AD) patients with an inherited form of the disease carry mutations in the presenilin proteins (PSEN1 or PSEN2) or the amyloid precursor protein (APP). These disease-linked mutations result in increased production of the longer form of amyloid-beta (main component of amyloid deposits found in AD brains). Presenilins are postulated to regulate APP processing through their effects on gamma-secretase, an enzyme that cleaves APP. Also, it is

## Target Details

---

thought that the presenilins are involved in the cleavage of the Notch receptor such that, they either directly regulate gamma-secretase activity, or themselves act as protease enzymes.

Molecular Weight: 49 kDa (MW of target protein)

Pathways: [Notch Signaling](#), [EGFR Signaling Pathway](#), [Neurotrophin Signaling Pathway](#)

## Application Details

---

Application Notes: WB: 1 µg/mL, IHC: 4-8 µg/mL  
Optimal conditions should be determined by the investigator.

Comment: Presenilin 2 Blocking Peptide, catalog no. 33R-9902, is also available for use as a blocking control in assays to test for specificity of this Presenilin 2 antibody

Restrictions: For Research Use only

## Handling

---

Format: Lyophilized

Reconstitution: Lyophilized powder. Add distilled water for a 1 mg/mL concentration of PSEN2 antibody in PBS

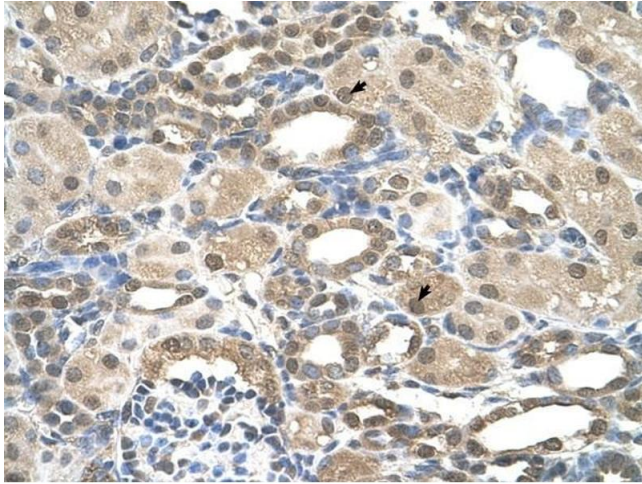
Concentration: Lot specific

Buffer: PBS

Handling Advice: Avoid repeated freeze/thaw cycles.

Storage: 4 °C/-20 °C

Storage Comment: Store at 2-8 °C for short periods. For longer periods of storage, store at -20 °C.



### Immunohistochemistry

**Image 1.** Presenilin 2 antibody was used for immunohistochemistry at a concentration of 4-8 ug/ml to stain Epithelial cells of renal tubule (arrows) in Human Kidney. Magnification is at 400X



### Western Blotting

**Image 2.** Presenilin 2 antibody used at 1 ug/ml to detect target protein.