

Datasheet for ABIN634290 **anti-GRF2 antibody**



[Go to Product page](#)

1 Image

Overview

Quantity:	100 µL
Target:	GRF2 (RAPGEF1)
Reactivity:	Human, Mouse, Rat
Host:	Rabbit
Clonality:	Polyclonal
Conjugate:	This GRF2 antibody is un-conjugated
Application:	Western Blotting (WB)

Product Details

Immunogen:	RAPGEF1 antibody was raised using a synthetic peptide corresponding to a region with amino acids LWAKEQNEEKSPNLTQFTEHFNNMSYWVRSIIMLQEKAQDRERLLLKFIK
Purification:	Affinity purified

Target Details

Target:	GRF2 (RAPGEF1)
Alternative Name:	RAPGEF1 (RAPGEF1 Products)
Background:	RAPGEF1 is a human guanine nucleotide exchange factor. It transduces signals from CRK by binding the SH3 domain of CRK, and activating several members of the Ras family of GTPases. This signaling cascade protein may be involved in apoptosis, integrin-mediated signal transduction, and cell transformation.
Molecular Weight:	120 kDa (MW of target protein)

Target Details

Pathways: [Interferon-gamma Pathway](#), [Neurotrophin Signaling Pathway](#), [Platelet-derived growth Factor Receptor Signaling](#), [Signaling of Hepatocyte Growth Factor Receptor](#)

Application Details

Application Notes: WB: 1 µg/mL
Optimal conditions should be determined by the investigator.

Comment: RAPGEF1 Blocking Peptide, catalog no. 33R-5553, is also available for use as a blocking control in assays to test for specificity of this RAPGEF1 antibody

Restrictions: For Research Use only

Handling

Format: Lyophilized

Reconstitution: Lyophilized powder. Add distilled water for a 1 mg/mL concentration of RAPGEF1 antibody in PBS

Concentration: Lot specific

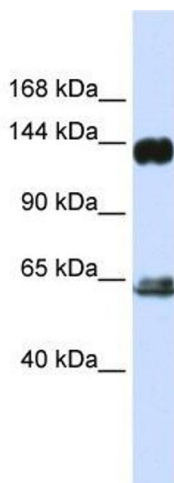
Buffer: PBS

Handling Advice: Avoid repeated freeze/thaw cycles.

Storage: 4 °C/-20 °C

Storage Comment: Store at 2-8 °C for short periods. For longer periods of storage, store at -20 °C.

Images



Western Blotting

Image 1. RAPGEF1 antibody used at 1 ug/ml to detect target protein.