

Datasheet for ABIN634296
anti-RGS3 antibody (C-Term)



[Go to Product page](#)

1 Image

Overview

Quantity:	100 µL
Target:	RGS3
Binding Specificity:	C-Term
Reactivity:	Human, Mouse, Rat
Host:	Rabbit
Clonality:	Polyclonal
Conjugate:	This RGS3 antibody is un-conjugated
Application:	Western Blotting (WB)

Product Details

Immunogen:	RGS3 antibody was raised using the C terminal of RGS3 corresponding to a region with amino acids KDNLQSVTRGCFDLAQKRIFGLMEKDSYPRFLRSDLYLDLINQKKMSPPL
Specificity:	RGS3 antibody was raised against the C terminal of RGS3
Purification:	Affinity purified

Target Details

Target:	RGS3
Alternative Name:	RGS3 (RGS3 Products)
Background:	RGS3 inhibits signal transduction by increasing the GTPASE activity of G protein alpha subunits thereby driving them into their inactive GDP-bound form.

Target Details

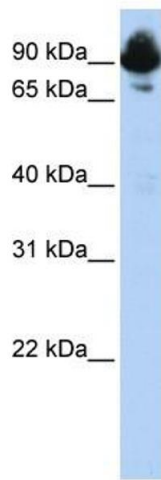
Molecular Weight:	101 kDa (MW of target protein)
Pathways:	Myometrial Relaxation and Contraction, Regulation of G-Protein Coupled Receptor Protein Signaling

Application Details

Application Notes:	WB: 0.2-1 µg/mL Optimal conditions should be determined by the investigator.
Comment:	RGS3 Blocking Peptide, catalog no. 33R-4300, is also available for use as a blocking control in assays to test for specificity of this RGS3 antibody
Restrictions:	For Research Use only

Handling

Format:	Lyophilized
Reconstitution:	Lyophilized powder. Add distilled water for a 1 mg/mL concentration of RGS3 antibody in PBS
Concentration:	Lot specific
Buffer:	PBS
Handling Advice:	Avoid repeated freeze/thaw cycles. Dilute only prior to immediate use.
Storage:	4 °C/-20 °C
Storage Comment:	Store at 2-8 °C for short periods. For longer periods of storage, store at -20 °C.



Western Blotting

Image 1. Western Blot showing RGS3 antibody used at a concentration of 1-2 ug/ml to detect its target protein.