

Datasheet for ABIN634331
anti-RHOC antibody (N-Term)



[Go to Product page](#)

1 Image

Overview

Quantity:	100 µL
Target:	RHOC
Binding Specificity:	N-Term
Reactivity:	Human, Mouse, Rat, Dog, Drosophila melanogaster, C. elegans
Host:	Rabbit
Clonality:	Polyclonal
Conjugate:	This RHOC antibody is un-conjugated
Application:	Western Blotting (WB)

Product Details

Immunogen:	RHOC antibody was raised using the N terminal of RHOC corresponding to a region with amino acids VPTVFENYIADIEVDGKQVELALWDTAGQEDYDRLRPLSYPTDVMLMCF
Specificity:	RHOC antibody was raised against the N terminal of RHOC
Purification:	Affinity purified

Target Details

Target:	RHOC
Alternative Name:	RHOC (RHOC Products)
Background:	RHOC is a member of the Rho family of small GTPases, which cycle between inactive GDP-bound and active GTP-bound states and function as molecular switches in signal transduction cascades. Rho proteins promote reorganization of the actin cytoskeleton and regulate cell

Target Details

shape, attachment, and motility. RHOC is prenylated at its C-terminus, and localizes to the cytoplasm and plasma membrane. It is thought to be important in cell locomotion. Overexpression of RHOC is associated with tumor cell proliferation and metastasis.

Molecular Weight: 22 kDa (MW of target protein)

Pathways: [WNT Signaling](#), [Cell-Cell Junction Organization](#)

Application Details

Application Notes: WB: 1 µg/mL
Optimal conditions should be determined by the investigator.

Comment: RHOC Blocking Peptide, catalog no. 33R-9740, is also available for use as a blocking control in assays to test for specificity of this RHOC antibody

Restrictions: For Research Use only

Handling

Format: Lyophilized

Reconstitution: Lyophilized powder. Add distilled water for a 1 mg/mL concentration of RHOC antibody in PBS

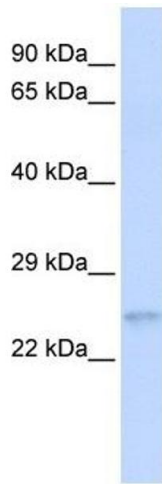
Concentration: Lot specific

Buffer: PBS

Handling Advice: Avoid repeated freeze/thaw cycles.
Dilute only prior to immediate use.

Storage: 4 °C/-20 °C

Storage Comment: Store at 2-8 °C for short periods. For longer periods of storage, store at -20 °C.



Western Blotting

Image 1. RHOC antibody used at 1 ug/ml to detect target protein.