

Datasheet for ABIN634334
anti-SKAP1 antibody (N-Term)



[Go to Product page](#)

1 Image

Overview

Quantity:	100 µL
Target:	SKAP1
Binding Specificity:	N-Term
Reactivity:	Human
Host:	Rabbit
Clonality:	Polyclonal
Conjugate:	This SKAP1 antibody is un-conjugated
Application:	Western Blotting (WB)

Product Details

Immunogen:	SKAP1 antibody was raised using the N terminal of SKAP1 corresponding to a region with amino acids RDHILRGFQQIKARYYWDFQPQGGDIGQDSSDDNHSGLGLSLTSDAPFL
Specificity:	SKAP1 antibody was raised against the N terminal of SKAP1
Purification:	Affinity purified

Target Details

Target:	SKAP1
Alternative Name:	SKAP1 (SKAP1 Products)
Background:	SKAP1 Is a T cell adaptor protein, a class of intracellular molecules with modular domains capable of recruiting additional proteins but that exhibit no intrinsic enzymatic activity. The encoded protein contains a unique N-terminal region followed by a PH domain and C-terminal

Target Details

SH3 domain. Along with the adhesion and degranulation-promoting adaptor protein, the encoded protein plays a critical role in inside-out signaling by coupling T-cell antigen receptor stimulation to the activation of integrins.

Molecular Weight: 41 kDa (MW of target protein)

Application Details

Application Notes: WB: 1 µg/mL
Optimal conditions should be determined by the investigator.

Comment: SKAP1 Blocking Peptide, catalog no. 33R-7848, is also available for use as a blocking control in assays to test for specificity of this SKAP1 antibody

Restrictions: For Research Use only

Handling

Format: Lyophilized

Reconstitution: Lyophilized powder. Add distilled water for a 1 mg/mL concentration of SKAP1 antibody in PBS

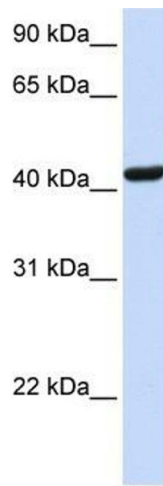
Concentration: Lot specific

Buffer: PBS

Handling Advice: Avoid repeated freeze/thaw cycles.
Dilute only prior to immediate use.

Storage: 4 °C/-20 °C

Storage Comment: Store at 2-8 °C for short periods. For longer periods of storage, store at -20 °C.



Western Blotting

Image 1. SKAP1 antibody used at 1 ug/ml to detect target protein.