

Datasheet for ABIN634335 **anti-SHB antibody (N-Term)**



[Go to Product page](#)

1 Image

Overview

Quantity:	100 µL
Target:	SHB
Binding Specificity:	N-Term
Reactivity:	Human, Mouse
Host:	Rabbit
Clonality:	Polyclonal
Conjugate:	This SHB antibody is un-conjugated
Application:	Western Blotting (WB)

Product Details

Immunogen:	SHB antibody was raised using the N terminal of SHB corresponding to a region with amino acids ERPSQPPQAVPQASSAASASCGPATASCFSASSGSLPDDSGSTSDLIRAY
Specificity:	SHB antibody was raised against the N terminal of SHB
Purification:	Affinity purified

Target Details

Target:	SHB
Alternative Name:	SHB (SHB Products)
Background:	SHB is the adapter protein which regulates several signal transduction cascades by linking activated receptors to downstream signaling components. SHB may play a role in angiogenesis by regulating FGFR1, VEGFR2 and PDGFR signaling. SHB may also play a role in T-cell antigen

Target Details

receptor/TCR signaling, interleukin-2 signaling, apoptosis and neuronal cells differentiation by mediating basic-FGF and NGF-induced signaling cascades. SHB may also regulate IRS1 and IRS2 signaling in insulin-producing cells.

Molecular Weight: 55 kDa (MW of target protein)

Application Details

Application Notes: WB: 1 µg/mL
Optimal conditions should be determined by the investigator.

Comment: SHB Blocking Peptide, catalog no. 33R-2710, is also available for use as a blocking control in assays to test for specificity of this SHB antibody

Restrictions: For Research Use only

Handling

Format: Lyophilized

Reconstitution: Lyophilized powder. Add distilled water for a 1 mg/mL concentration of SHB antibody in PBS

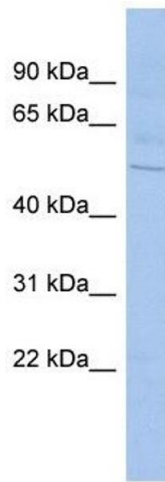
Concentration: Lot specific

Buffer: PBS

Handling Advice: Avoid repeated freeze/thaw cycles.
Dilute only prior to immediate use.

Storage: 4 °C/-20 °C

Storage Comment: Store at 2-8 °C for short periods. For longer periods of storage, store at -20 °C.



Western Blotting

Image 1. SHB antibody used at 1 ug/ml to detect target protein.