

Datasheet for ABIN634342
anti-STK38 antibody (C-Term)



[Go to Product page](#)

1 Image

Overview

| | |
|----------------------|--------------------------------------|
| Quantity: | 100 µL |
| Target: | STK38 |
| Binding Specificity: | C-Term |
| Reactivity: | Human, Mouse, Rat |
| Host: | Rabbit |
| Clonality: | Polyclonal |
| Conjugate: | This STK38 antibody is un-conjugated |
| Application: | Western Blotting (WB) |

Product Details

| | |
|---------------|---|
| Immunogen: | STK38 antibody was raised using the C terminal of STK38 corresponding to a region with amino acids IGAPGVVEIKSNSFFEGVDWEHIRERPAAISIEIKSIDDTSNFDEFPESD |
| Specificity: | STK38 antibody was raised against the C terminal of STK38 |
| Purification: | Affinity purified |

Target Details

| | |
|-------------------|---|
| Target: | STK38 |
| Alternative Name: | STK38 (STK38 Products) |
| Background: | STK38 belongs to the protein kinase superfamily, AGC Ser/Thr protein kinase family. It contains 1 AGC-kinase C-terminal domain and 1 protein kinase domain. NDR-driven centrosome duplication requires Cdk2 activity and that Cdk2-induced centrosome amplification is affected |

Target Details

upon reduction of NDR activity.

Molecular Weight: 54 kDa (MW of target protein)

Application Details

Application Notes: WB: 1 µg/mL

Optimal conditions should be determined by the investigator.

Comment: STK38 Blocking Peptide, catalog no. 33R-3966, is also available for use as a blocking control in assays to test for specificity of this STK38 antibody

Restrictions: For Research Use only

Handling

Format: Lyophilized

Reconstitution: Lyophilized powder. Add distilled water for a 1 mg/mL concentration of STK38 antibody in PBS

Concentration: Lot specific

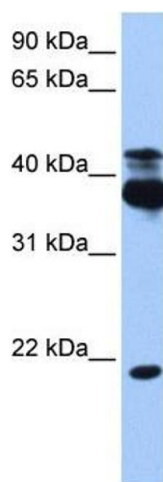
Buffer: PBS

Handling Advice: Avoid repeated freeze/thaw cycles.
Dilute only prior to immediate use.

Storage: 4 °C/-20 °C

Storage Comment: Store at 2-8 °C for short periods. For longer periods of storage, store at -20 °C.

Images



Western Blotting

Image 1. STK38 antibody used at 1 µg/ml to detect target protein.