

Datasheet for ABIN634344  
**anti-SH2D3C antibody (N-Term)**



[Go to Product page](#)

1 Image

## Overview

|                      |                                       |
|----------------------|---------------------------------------|
| Quantity:            | 100 µL                                |
| Target:              | SH2D3C                                |
| Binding Specificity: | N-Term                                |
| Reactivity:          | Human, Mouse, Rat                     |
| Host:                | Rabbit                                |
| Clonality:           | Polyclonal                            |
| Conjugate:           | This SH2D3C antibody is un-conjugated |
| Application:         | Western Blotting (WB)                 |

## Product Details

|               |  |
|---------------|--|
| Immunogen:    | SH2 D2 antibody was raised using the N terminal of SH2 2 corresponding to a region with amino acids AGSDYVKFSKEKYILDSSPEKLNHKELEELKLSSTDLRSHAWYHGRIPRE |
| Specificity:  | SH2 D2 antibody was raised against the N terminal of SH2 2   |
| Purification: | Affinity purified  |

## Target Details

|                   |  |
|-------------------|--|
| Target:           | SH2D3C   |
| Alternative Name: | SH2D3C ( <a href="#">SH2D3C Products</a> )   |
| Background:       | SH2D3C is an Eph receptor-binding protein which may be a positive regulator of TCR signaling. Binding to BCAR1 of SH2D3C is required to induce membrane ruffling and promote EGF-dependent cell migration. |

## Target Details

---

Molecular Weight: 77 kDa (MW of target protein)

## Application Details

---

Application Notes: WB: 1 µg/mL  
Optimal conditions should be determined by the investigator.

Comment: SH2D3C Blocking Peptide, catalog no. 33R-1220, is also available for use as a blocking control in assays to test for specificity of this SH2D3C antibody

Restrictions: For Research Use only

## Handling

---

Format: Lyophilized

Reconstitution: Lyophilized powder. Add distilled water for a 1 mg/mL concentration of SH0 0 antibody in PBS

Concentration: Lot specific

Buffer: PBS

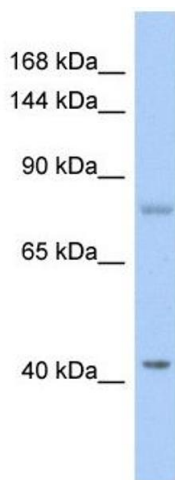
Handling Advice: Avoid repeated freeze/thaw cycles.  
Dilute only prior to immediate use.

Storage: 4 °C/-20 °C

Storage Comment: Store at 2-8 °C for short periods. For longer periods of storage, store at -20 °C.

## Images

---



### Western Blotting

**Image 1.** SH2D3C antibody used at 1 ug/ml to detect target protein.