

## Datasheet for ABIN634377 **anti-RASGRP2 antibody**



[Go to Product page](#)

### 1 Image

#### Overview

Quantity:	100 µL
Target:	RASGRP2
Reactivity:	Human, Rat
Host:	Rabbit
Clonality:	Polyclonal
Conjugate:	This RASGRP2 antibody is un-conjugated
Application:	Western Blotting (WB)

#### Product Details

Immunogen:	RASGRP2 antibody was raised using a synthetic peptide corresponding to a region with amino acids LVRMFLMMHPWYIPSSQLAAKLLHIYQSRKDNSNSLQVKTCHLVRYWIS
Purification:	Affinity purified

#### Target Details

Target:	RASGRP2
Alternative Name:	RASGRP2 ( <a href="#">RASGRP2 Products</a> )
Background:	The protein encoded by this gene is a brain-enriched nucleotide exchanged factor that contains an N-terminal GEF domain, 2 tandem repeats of EF-hand calcium-binding motifs, and a C-terminal diacylglycerol/phorbol ester-binding domain.
Molecular Weight:	69 kDa (MW of target protein)
Pathways:	<a href="#">TCR Signaling</a>

## Application Details

---

Application Notes:	WB: 1 µg/mL Optimal conditions should be determined by the investigator.
Comment:	RASGRP2 Blocking Peptide, catalog no. 33R-5537, is also available for use as a blocking control in assays to test for specificity of this RASGRP2 antibody
Restrictions:	For Research Use only

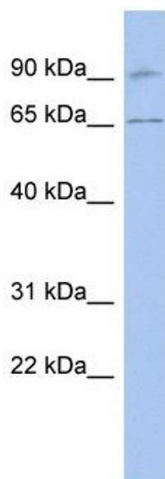
## Handling

---

Format:	Lyophilized
Reconstitution:	Lyophilized powder. Add distilled water for a 1 mg/mL concentration of RASGRP2 antibody in PBS
Concentration:	Lot specific
Buffer:	PBS
Handling Advice:	Avoid repeated freeze/thaw cycles.
Storage:	4 °C/-20 °C
Storage Comment:	Store at 2-8 °C for short periods. For longer periods of storage, store at -20 °C.

## Images

---



### Western Blotting

**Image 1.** RASGRP2 antibody used at 1 ug/ml to detect target protein.