

Datasheet for ABIN634385
anti-OTUD6B antibody (Middle Region)



[Go to Product page](#)

1 Image

Overview

Quantity:	100 µL
Target:	OTUD6B
Binding Specificity:	Middle Region
Reactivity:	Human, Mouse, Rat
Host:	Rabbit
Clonality:	Polyclonal
Conjugate:	This OTUD6B antibody is un-conjugated
Application:	Western Blotting (WB)

Product Details

Immunogen:	OTUD6 B antibody was raised using the middle region of OTUD6 corresponding to a region with amino acids EIIQADSPPIIVGEEYSKKPLILVYMRHAYGLGEHYNSVTRLVNIVTENC
Specificity:	OTUD6 B antibody was raised against the middle region of OTUD6
Purification:	Affinity purified

Target Details

Target:	OTUD6B
Alternative Name:	OTUD6B (OTUD6B Products)
Background:	Deubiquitinating enzymes are proteases that specifically cleave ubiquitin linkages, negating the action of ubiquitin ligases. DUBA5 belongs to a DUB subfamily characterized by an ovarian tumor (OTU) domain.

Target Details

Molecular Weight: 37 kDa (MW of target protein)

Application Details

Application Notes: WB: 1 µg/mL
Optimal conditions should be determined by the investigator.

Comment: OTUD6B Blocking Peptide, catalog no. 33R-2473, is also available for use as a blocking control in assays to test for specificity of this OTUD6B antibody

Restrictions: For Research Use only

Handling

Format: Lyophilized

Reconstitution: Lyophilized powder. Add distilled water for a 1 mg/mL concentration of OTUD0 antibody in PBS

Concentration: Lot specific

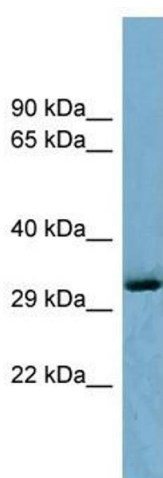
Buffer: PBS

Handling Advice: Avoid repeated freeze/thaw cycles.
Dilute only prior to immediate use.

Storage: 4 °C/-20 °C

Storage Comment: Store at 2-8 °C for short periods. For longer periods of storage, store at -20 °C.

Images



Western Blotting

Image 1. OTUD6B antibody used at 1 ug/ml to detect target protein.