

Datasheet for ABIN634389  
**anti-RASGRF1 antibody (N-Term)**



[Go to Product page](#)

1 Image

## Overview

Quantity:	100 µL
Target:	RASGRF1
Binding Specificity:	N-Term
Reactivity:	Human
Host:	Rabbit
Clonality:	Polyclonal
Conjugate:	This RASGRF1 antibody is un-conjugated
Application:	Western Blotting (WB)

## Product Details

Immunogen:	RASGRF1 antibody was raised using the N terminal of RASGRF1 corresponding to a region with amino acids RELDNNRSALSAASAFAIATAGANEGTPNKEYRRMSLASAGFPDQRNG
Specificity:	RASGRF1 antibody was raised against the N terminal of RASGRF1
Purification:	Affinity purified

## Target Details

Target:	RASGRF1
Alternative Name:	RASGRF1 ( <a href="#">RASGRF1 Products</a> )
Background:	The protein encoded by this gene is a guanine nucleotide exchange factor (GEF) similar to the Saccharomyces cerevisiae CDC25 gene product. Functional analysis has demonstrated that this protein stimulates the dissociation of GDP from RAS protein.

## Target Details

---

Molecular Weight:	54 kDa (MW of target protein)
Pathways:	<a href="#">RTK Signaling</a> , <a href="#">Cell Division Cycle</a> , <a href="#">M Phase</a>

## Application Details

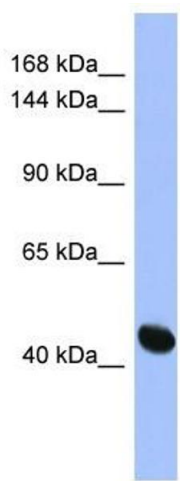
---

Application Notes:	WB: 1 µg/mL Optimal conditions should be determined by the investigator.
Comment:	RASGRF1 Blocking Peptide, catalog no. 33R-7877, is also available for use as a blocking control in assays to test for specificity of this RASGRF1 antibody
Restrictions:	For Research Use only

## Handling

---

Format:	Lyophilized
Reconstitution:	Lyophilized powder. Add distilled water for a 1 mg/mL concentration of RASGRF1 antibody in PBS
Concentration:	Lot specific
Buffer:	PBS
Handling Advice:	Avoid repeated freeze/thaw cycles. Dilute only prior to immediate use.
Storage:	4 °C/-20 °C
Storage Comment:	Store at 2-8 °C for short periods. For longer periods of storage, store at -20 °C.



### Western Blotting

**Image 1.** RASGRF1 antibody used at 1 ug/ml to detect target protein.